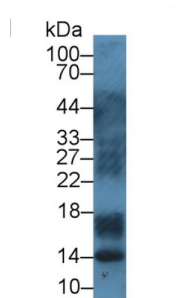
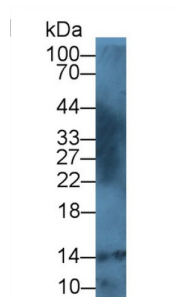


S100 Calcium Binding Protein A12 (S100A12) Antibody

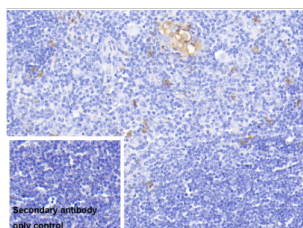
Catalogue No.: abx130879



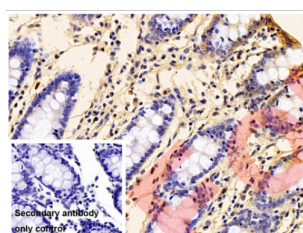
WB analysis of Pig lymph node lysate, using S100A12 antibody (1 µg/ml) and HRP-conjugated Goat Anti-Rabbit antibody ([abx400043](#), 0.2 µg/ml).



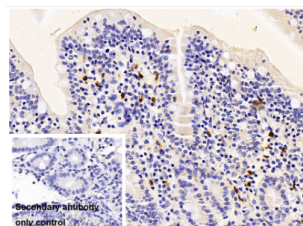
WB analysis of Human leukocyte lysate, using S100A12 antibody (1 µg/ml) and HRP-conjugated Goat Anti-Rabbit antibody ([abx400043](#), 0.2 µg/ml).



IHC-P analysis with DAB staining, of Cow thymus tissue using S100A12 antibody (20 µg/ml) and HRP-conjugated Goat Anti-Rabbit antibody ([abx400043](#), 2 µg/ml). PBS was used instead of the primary antibody as a negative control (bottom left).



IHC-P analysis with DAB staining, of Pig colon tissue using S100A12 antibody (10 µg/ml) and HRP-conjugated Goat Anti-Rabbit antibody ([abx400043](#), 2 µg/ml). PBS was used instead of the primary antibody as a negative control (bottom left).

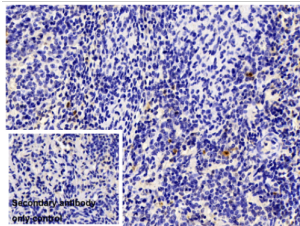


IHC-P analysis with DAB staining, of Pig small intestine tissue using S100A12 antibody (10 µg/ml) and HRP-conjugated Goat Anti-Rabbit antibody ([abx400043](#), 2 µg/ml). PBS was used instead of the primary antibody as a negative control (bottom left).

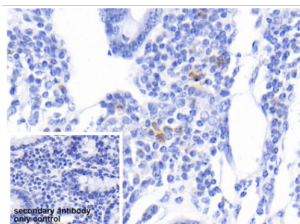
Datasheet

Version: 7.0.0

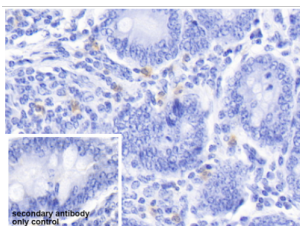
Revision date: 08 Oct 2025



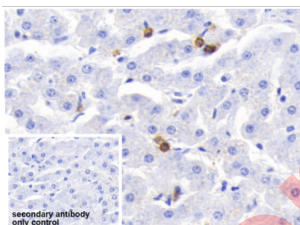
IHC-P analysis with DAB staining, of Pig spleen tissue using S100A12 antibody (10 µg/ml) and HRP-conjugated Goat Anti-Rabbit antibody ([abx400043](#), 2 µg/ml). PBS was used instead of the primary antibody as a negative control (bottom left).



IHC-P analysis with DAB staining, of Cow colon tissue using S100A12 antibody (20 µg/ml) and HRP-conjugated Goat Anti-Rabbit antibody ([abx400043](#), 2 µg/ml). PBS was used instead of the primary antibody as a negative control (bottom left).



IHC-P analysis with DAB staining, of Cow small intestine tissue using S100A12 antibody (20 µg/ml) and HRP-conjugated Goat Anti-Rabbit antibody ([abx400043](#), 2 µg/ml). PBS was used instead of the primary antibody as a negative control (bottom left).



IHC-P analysis with DAB staining, of Cow liver tissue using S100A12 antibody (20 µg/ml) and HRP-conjugated Goat Anti-Rabbit antibody ([abx400043](#), 2 µg/ml). PBS was used instead of the primary antibody as a negative control (bottom left).

S100A12 Antibody is a Rabbit Polyclonal against S100A12.

Target: S100 Calcium Binding Protein A12 (S100A12)

Clonality: Polyclonal

Reactivity: Cow

Tested Applications: WB, IHC, IF/ICC

Datasheet

Version: 7.0.0
Revision date: 08 Oct 2025



Host: Rabbit

Recommended dilutions: WB: 0.01-2 µg/ml, IHC: 5-20 µg/ml, IF/ICC: 5-20 µg/ml. Optimal dilutions/concentrations should be determined by the end user.

Conjugation: Unconjugated

Immunogen: [abx168682](#) - Recombinant S100A12 (Thr2-Glu92) expressed in E. coli.

Form: Liquid

Purification: Purified by antigen-specific affinity chromatography, followed by Protein A affinity chromatography.

Storage: Aliquot and store at -20°C. Avoid repeated freeze/thaw cycles.

UniProt Primary AC: P79105 ([UniProt](#), [ExPASy](#))

Gene Symbol: S100A12

GenelD: [282467](#)

KEGG: bta:282467

String: [9913.ENSBTAP00000056088](#)

Buffer: 0.01 M PBS, pH 7.4, containing 0.05% Proclin-300, 50% glycerol.

Specificity: Cross-reacts with Human, Mouse, Rat and Pig S100A12.

Concentration: 1 mg/ml

Note: THIS PRODUCT IS FOR RESEARCH USE ONLY. NOT FOR USE IN DIAGNOSTIC, THERAPEUTIC OR COSMETIC PROCEDURES. NOT FOR HUMAN OR ANIMAL CONSUMPTION.