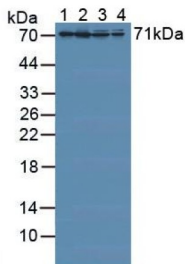
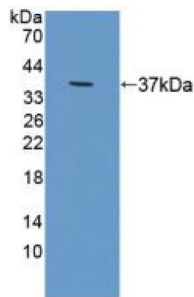


## Radixin (RDX) Antibody

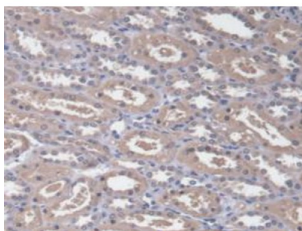
Catalogue No.: abx130947



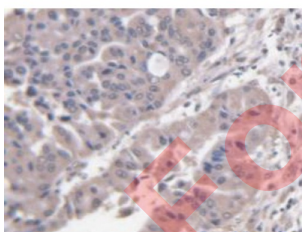
Western blot analysis of (1) Porcine Liver Tissue, (2) Porcine Kidney Tissue, (3) Human HeLa cells and (4) Human 293T Cells.



Western blot analysis of recombinant Human RDX.



IHC-P analysis of Human Kidney Tissue, with DAB staining.



IHC-P analysis of Human Liver Cancer Tissue, with DAB staining.

Radixin (RDX) Antibody is a Rabbit Polyclonal against Radixin (RDX). Radixin is a cytoskeletal protein that may be important in linking actin to the plasma membrane. It is highly similar in sequence to both ezrin and moesin. The radixin gene has been localized by fluorescence in situ hybridization to 11q23. A truncated version representing a pseudogene (RDXP2) was assigned to Xp21.3. Another pseudogene that seemed to lack introns (RDXP1) was mapped to 11p by Southern and PCR analyses. Multiple alternatively spliced transcript variants encoding different isoforms have been found for this gene.

**Target:** Radixin (RDX)

# Datasheet

Version: 3.0.0  
Revision date: 28 Aug 2025



Clonality:	Polyclonal
Reactivity:	Human
Tested Applications:	WB, IHC, IF/ICC
Host:	Rabbit
Recommended dilutions:	WB: 0.01-2 µg/ml, IHC: 5-20 µg/ml, IF/ICC: 5-20 µg/ml. Optimal dilutions/concentrations should be determined by the end user.
Conjugation:	Unconjugated
Immunogen:	RDX (Ile5-Met295)
Form:	Liquid
Purification:	Purified by antigen-specific affinity chromatography, followed by Protein A affinity chromatography.
Storage:	Aliquot and store at -20°C. Avoid repeated freeze/thaw cycles.
UniProt Primary AC:	P35241 ( <a href="#">UniProt</a> , <a href="#">ExPASy</a> )
Gene Symbol:	RDX
GeneID:	<a href="#">5962</a>
OMIM:	<a href="#">179410</a>
NCBI Accession:	NM_002906.3
HGNC:	9944
KEGG:	hsa:5962
Ensembl:	ENSG00000137710
String:	<a href="#">9606.ENSP00000384136</a>
Buffer:	0.01 M PBS, pH 7.4, containing 0.05% Proclin-300, 50% glycerol.
Note:	THIS PRODUCT IS FOR RESEARCH USE ONLY. NOT FOR USE IN DIAGNOSTIC, THERAPEUTIC OR COSMETIC PROCEDURES. NOT FOR HUMAN OR ANIMAL CONSUMPTION.