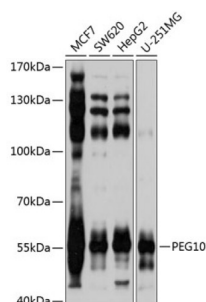
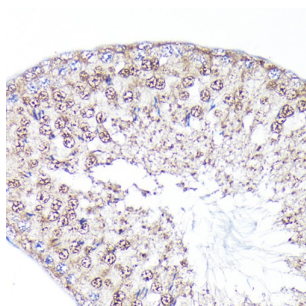


Retrotransposon-Derived Protein PEG10 (PEG10) Antibody

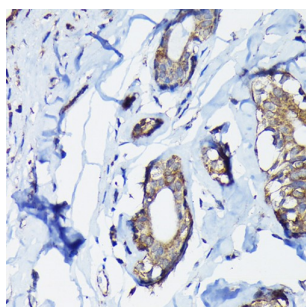
Catalogue No.: abx002092



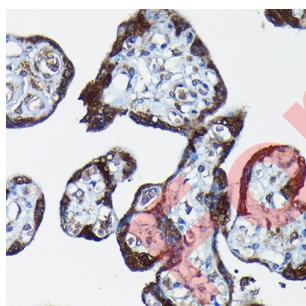
Western blot analysis of various lysates using PEG10 Antibody at 1/1000 dilution. Secondary antibody: HRP-conjugated Goat anti-Rabbit IgG (H+L) at 1/10000 dilution. Lysates/proteins: 25 µg per lane. Blocking buffer: 3% nonfat dry milk in TBST. Exposure time: 1s.



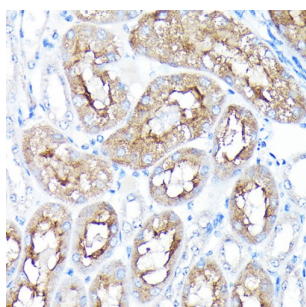
Immunohistochemistry analysis of paraffin-embedded Rat testis using PEG10 Antibody at dilution of 1/100 (40x lens). High pressure antigen retrieval performed in 0.01 M Citrate buffer (pH 6.0) prior to IHC staining.



Immunohistochemistry analysis of paraffin-embedded Human breast cancer using PEG10 Antibody at dilution of 1/100 (40x lens). High pressure antigen retrieval performed in 0.01 M Citrate buffer (pH 6.0) prior to IHC staining.



Immunohistochemistry analysis of paraffin-embedded Human placenta using PEG10 Antibody at dilution of 1/100 (40x lens). High pressure antigen retrieval performed in 0.01 M Citrate buffer (pH 6.0) prior to IHC staining.



Immunohistochemistry analysis of paraffin-embedded Mouse kidney using PEG10 Antibody at dilution of 1/100 (40x lens). High pressure antigen retrieval performed in 0.01 M Citrate buffer (pH 6.0) prior to IHC staining.

Datasheet

Version: 6.0.0
Revision date: 07 Sep 2025



PEG10 Antibody is a Rabbit Polyclonal antibody against PEG10. This is a paternally expressed imprinted gene that encodes transcripts containing two overlapping open reading frames (ORFs), RF1 and RF1/RF2, as well as retroviral-like slippage and pseudoknot elements, which can induce a -1 nucleotide frame-shift. ORF1 encodes a shorter isoform with a CCHC-type zinc finger motif containing a sequence characteristic of gag proteins of most retroviruses and some retrotransposons. The longer isoform is the result of -1 translational frame-shifting leading to translation of a gag/pol-like protein combining RF1 and RF2. It contains the active-site consensus sequence of the protease domain of pol proteins. Additional isoforms resulting from alternatively spliced transcript variants, as well as from use of upstream non-AUG (CUG) start codon, have been reported for this gene. Increased expression of this gene is associated with hepatocellular carcinomas.

Target:	Retrotransposon-Derived Protein PEG10 (PEG10)
Clonality:	Polyclonal
Reactivity:	Human, Mouse, Rat
Tested Applications:	ELISA, WB, IHC
Host:	Rabbit
Recommended dilutions:	ELISA: 1 µg/ml, WB: 1/200 - 1/2000, IHC-P: 1/50 - 1/200. Not tested in IHC-F. Optimal dilutions/concentrations should be determined by the end user.
Conjugation:	Unconjugated
Immunogen:	Recombinant protein corresponding to PEG10. The exact sequence is proprietary.
Isotype:	IgG
Form:	Liquid
Purification:	Purified by affinity chromatography.
Storage:	Aliquot and store at -20°C. Avoid repeated freeze/thaw cycles.
UniProt Primary AC:	Q86TG7 (UniProt , ExPASy)
Gene Symbol:	PEG10
GeneID:	23089
NCBI Accession:	NP_001035242.1
KEGG:	hsa:23089
String:	9606.ENSP00000418944

Datasheet

Version: 6.0.0

Revision date: 07 Sep 2025



Molecular Weight: Calculated MW: 80 kDa
Observed MW: 55 kDa

Buffer: PBS, pH 7.3, containing 0.02% sodium azide, 50% glycerol.

Concentration: > 0.2 mg/ml

Note: THIS PRODUCT IS FOR RESEARCH USE ONLY. NOT FOR USE IN DIAGNOSTIC, THERAPEUTIC OR COSMETIC PROCEDURES. NOT FOR HUMAN OR ANIMAL CONSUMPTION.

For Reference Only