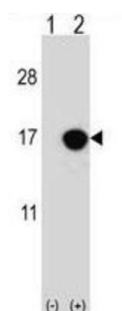
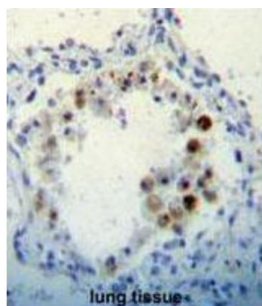
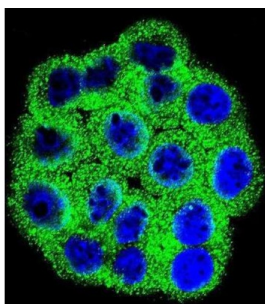


## Cyclin Dependent Kinase Inhibitor 2B (CDKN2B) Antibody

Catalogue No.: abx026926



This gene lies adjacent to the tumor suppressor gene CDKN2A in a region that is frequently mutated and deleted in a wide variety of tumors. This gene encodes a cyclin-dependent kinase inhibitor, which forms a complex with CDK4 or CDK6, and prevents the activation of the CDK kinases, thus the encoded protein functions as a cell growth regulator that controls cell cycle G1 progression. The expression of this gene was found to be dramatically induced by TGF beta, which suggested its role in the TGF beta induced growth inhibition. Two alternatively spliced transcript variants of this gene, which encode distinct proteins, have been reported.

**Target:** Cyclin Dependent Kinase Inhibitor 2B (CDKN2B)

**Clonality:** Polyclonal

**Reactivity:** Human

**Tested Applications:** ELISA, WB, IHC, IF/ICC, FCM

**Host:** Rabbit

# Datasheet

Version: 4.0.0  
Revision date: 01 Jun 2025



**Recommended dilutions:** WB: 1/1000, IHC-P: 1/10 - 1/50, IF/ICC: 1/10 - 1/50, FCM: 1/10 - 1/50. Not tested in IHC-F. Optimal dilutions/concentrations should be determined by the end user.

**Conjugation:** Unconjugated

**Immunogen:** KLH-conjugated synthetic peptide between 102-130 amino acids from the C-terminal region of human CDKN2B.

**Isotype:** IgG

**Form:** Liquid

**Purification:** Purified through a protein A column, followed by peptide affinity purification.

**Storage:** Aliquot and store at -20°C. Avoid repeated freeze/thaw cycles.

**UniProt Primary AC:** P42772 ([UniProt](#), [ExPASy](#))

**Gene Symbol:** CDKN2B

**KEGG:** hsa:1030

**String:** [9606.ENSP00000276925](#)

**Molecular Weight:** Calculated MW: 14.7 kDa

**Buffer:** PBS containing 0.09% sodium azide.

**Note:** THIS PRODUCT IS FOR RESEARCH USE ONLY. NOT FOR USE IN DIAGNOSTIC, THERAPEUTIC OR COSMETIC PROCEDURES. NOT FOR HUMAN OR ANIMAL CONSUMPTION.