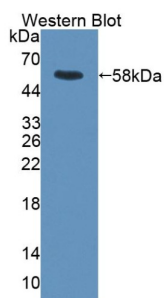
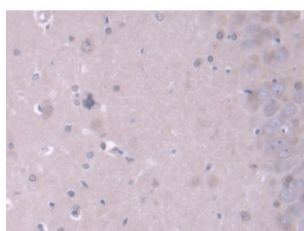


Regulator of G Protein Signaling 6 (RGS6) Antibody

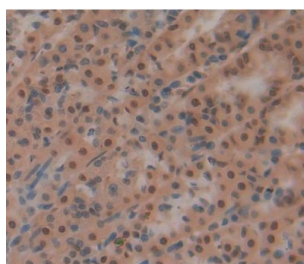
Catalogue No.: abx131059



Western blot analysis of the recombinant protein.



IHC-P analysis of Rat Cerebrum Tissue, with DAB staining.



IHC-P analysis of stomach tissue, with DAB staining.

RGS6 Antibody is a Rabbit Polyclonal against RGS6.

Target: Regulator of G Protein Signaling 6 (RGS6)

Clonality: Polyclonal

Reactivity: Rat

Tested Applications: WB, IHC, IF/ICC

Host: Rabbit

Recommended dilutions: WB: 0.01-2 µg/ml, IHC: 5-20 µg/ml, IF/ICC: 5-20 µg/ml. Optimal dilutions/concentrations should be determined by the end user.

Conjugation: Unconjugated

Datasheet

Version: 3.0.0

Revision date: 22 Dec 2025



Immunogen:	RGS6 (Met1-Ser472)
Form:	Liquid
Purification:	Purified by antigen-specific affinity chromatography, followed by Protein A affinity chromatography.
Storage:	Aliquot and store at -20°C. Avoid repeated freeze/thaw cycles.
UniProt Primary AC:	F1LS67 (UniProt , ExPASy)
Buffer:	0.01 M PBS, pH 7.4, containing 0.05% Proclin-300, 50% glycerol.
Concentration:	1 mg/ml
Note:	THIS PRODUCT IS FOR RESEARCH USE ONLY. NOT FOR USE IN DIAGNOSTIC, THERAPEUTIC OR COSMETIC PROCEDURES. NOT FOR HUMAN OR ANIMAL CONSUMPTION.

For Reference Only