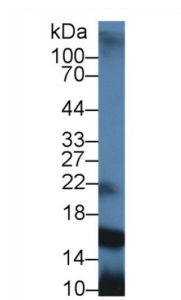
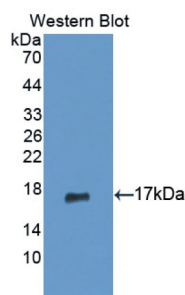


Prolactin Induced Protein (PIP) Antibody

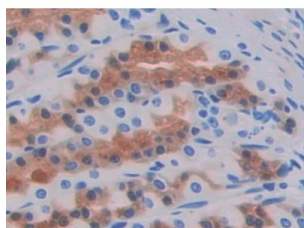
Catalogue No.: abx131067



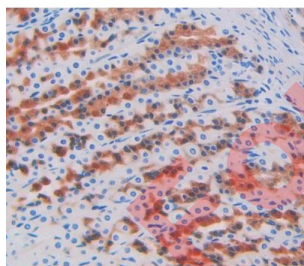
Western blot analysis of Rat Parotid Gland lysate, using Rat PIP Antibody (2 µg/ml) and HRP-conjugated Goat Anti-Rabbit antibody ([abx400043](#), 0.2 µg/ml).



Western blot analysis of the recombinant protein.



IHC-P analysis of Rat Stomach Tissue, with DAB staining.



IHC-P analysis of stomach tissue, with DAB staining.

Prolactin Induced Protein Antibody is a Rabbit Polyclonal against Prolactin Induced Protein.

Target: Prolactin Induced Protein (PIP)

Clonality: Polyclonal

Reactivity: Rat

Datasheet

Version: 4.0.0
Revision date: 28 Jul 2025



Tested Applications: WB, IHC, IF/ICC

Host: Rabbit

Recommended dilutions: WB: 0.01-2 µg/ml, IHC: 5-20 µg/ml, IF/ICC: 5-20 µg/ml. Optimal dilutions/concentrations should be determined by the end user.

Conjugation: Unconjugated

Immunogen: PIP (Asn41-Thr139)

Form: Liquid

Purification: Purified by antigen-specific affinity chromatography, followed by Protein A affinity chromatography.

Storage: Aliquot and store at -20°C. Avoid repeated freeze/thaw cycles.

UniProt Primary AC: O70417 ([UniProt](#), [ExPASy](#))

KEGG: rno:64673

String: [10116.ENSRNOP00000021576](#)

Buffer: 0.01 M PBS, pH 7.4, containing 0.05% Proclin-300, 50% glycerol.

Note: THIS PRODUCT IS FOR RESEARCH USE ONLY. NOT FOR USE IN DIAGNOSTIC, THERAPEUTIC OR COSMETIC PROCEDURES. NOT FOR HUMAN OR ANIMAL CONSUMPTION.