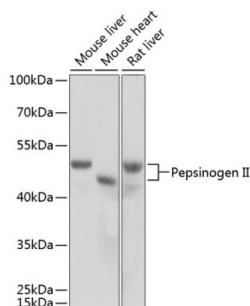


Pepsinogen C (PGC) Antibody

Catalogue No.: abx002093



Western blot analysis of extracts of various cell lines using Pepsinogen II Antibody (1/1000 dilution).

Pepsinogen C Antibody is a Rabbit Polyclonal antibody against Pepsinogen C. This gene encodes an aspartic proteinase that belongs to the peptidase family A1. The encoded protein is a digestive enzyme that is produced in the stomach and constitutes a major component of the gastric mucosa. This protein is also secreted into the serum. This protein is synthesized as an inactive zymogen that includes a highly basic prosegment. This enzyme is converted into its active mature form at low pH by sequential cleavage of the prosegment that is carried out by the enzyme itself. Polymorphisms in this gene are associated with susceptibility to gastric cancers. Serum levels of this enzyme are used as a biomarker for certain gastric diseases including Helicobacter pylori related gastritis. Alternate splicing results in multiple transcript variants. A pseudogene of this gene is found on chromosome 1.

Target: Pepsinogen C (PGC)

Clonality: Polyclonal

Reactivity: Human, Mouse, Rat

Tested Applications: WB

Host: Rabbit

Recommended dilutions: WB: 1/500 - 1/2000. Optimal dilutions/concentrations should be determined by the end user.

Conjugation: Unconjugated

Immunogen: A synthetic peptide corresponding to human Pepsinogen II

Isotype: IgG

Form: Liquid

Purification: Purified by affinity chromatography.

Storage: Aliquot and store at -20°C. Avoid repeated freeze/thaw cycles.

Datasheet

Version: 3.0.0

Revision date: 19 Jun 2025



UniProt Primary AC: P20142 ([UniProt](#), [ExPASy](#))

Gene Symbol: PGC

GeneID: [5225](#)

NCBI Accession: NP_001159896.1

Molecular Weight: Calculated MW: 34 kDa/42 kDa
Observed MW: 45-50 kDa

Buffer: PBS, pH 7.3, containing 0.02% sodium azide, 50% glycerol.

Concentration: 1 mg/ml

Note: THIS PRODUCT IS FOR RESEARCH USE ONLY. NOT FOR USE IN DIAGNOSTIC, THERAPEUTIC OR COSMETIC PROCEDURES. NOT FOR HUMAN OR ANIMAL CONSUMPTION.

For Reference Only