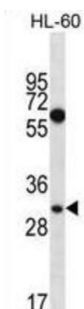


Mediator Complex Subunit 8 (MED8) Antibody

Catalogue No.: abx026938



This gene encodes a protein that is one of more than 20 subunits of the mediator complex, first identified in *S. cerevisiae*, that is required for activation of transcription. The product of this gene also interacts with elongins B and C, and CUL2 and RBX1, to reconstitute a ubiquitin ligase. Two alternative transcripts encoding different isoforms have been described.

Target: Mediator Complex Subunit 8 (MED8)

Clonality: Polyclonal

Reactivity: Human

Tested Applications: ELISA, WB

Host: Rabbit

Recommended dilutions: WB: 1/1000. Optimal dilutions/concentrations should be determined by the end user.

Conjugation: Unconjugated

Immunogen: KLH-conjugated synthetic peptide between 95-122 amino acids from the Central region of human MED8.

Isotype: IgG

Form: Liquid

Purification: Purified through a protein A column, followed by peptide affinity purification.

Storage: Aliquot and store at -20°C. Avoid repeated freeze/thaw cycles.

UniProt Primary AC: Q96G25 ([UniProt](#), [ExPASy](#))

KEGG: hsa:112950

Datasheet

Version: 3.0.0

Revision date: 29 Jun 2025



String: [9606.ENSPO0000290663](#)

Molecular Weight: Calculated MW: 29.1 kDa

Buffer: PBS containing 0.09% sodium azide.

Specificity: Predicted to react with Mouse and Zebrafish MED8.

Note: THIS PRODUCT IS FOR RESEARCH USE ONLY. NOT FOR USE IN DIAGNOSTIC, THERAPEUTIC OR COSMETIC PROCEDURES. NOT FOR HUMAN OR ANIMAL CONSUMPTION.

For Reference Only