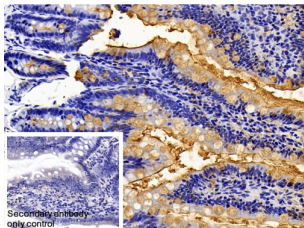
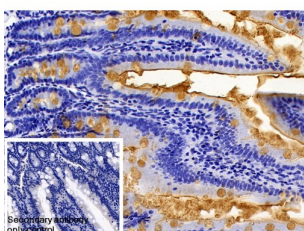


## Escherichia coli Lipopolysaccharide (LPS) Antibody

Catalogue No.: abx131271



IHC-P analysis with DAB staining, of Rat colon tissue using LPS antibody (10 µg/ml) and HRP-conjugated Goat Anti-Rabbit antibody ([abx400043](#), 2 µg/ml). PBS was used instead of the primary antibody as a negative control.



IHC-P analysis with DAB staining, of Rat small intestine tissue using LPS antibody (10 µg/ml) and HRP-conjugated Goat Anti-Rabbit antibody ([abx400043](#), 2 µg/ml). PBS was used instead of the primary antibody as a negative control.

Escherichia coli Lipopolysaccharide (LPS) Antibody is a Rabbit polyclonal antibody against LPS from the O55:B5 strain of E. coli.

**Target:** Escherichia coli Lipopolysaccharide (LPS)

**Clonality:** Polyclonal

**Reactivity:** General

**Tested Applications:** IHC

**Host:** Rabbit

**Recommended dilutions:** IHC: 5-20 µg/ml. Optimal dilutions/concentrations should be determined by the end user.

**Conjugation:** Unconjugated

**Immunogen:** [abx165771](#) - LPS conjugated to BSA

**Form:** Liquid

**Purification:** Purified by antigen-specific affinity chromatography, followed by Protein A affinity chromatography.

# Datasheet

Version: 8.0.0

Revision date: 05 Jun 2025



**Storage:** Aliquot and store at -20°C. Avoid repeated freeze/thaw cycles.

**Buffer:** 0.01 M PBS, pH 7.4, containing 0.05% Proclin-300, 50% glycerol.

**Concentration:** 1 mg/ml

**Note:** THIS PRODUCT IS FOR RESEARCH USE ONLY. NOT FOR USE IN DIAGNOSTIC, THERAPEUTIC OR COSMETIC PROCEDURES. NOT FOR HUMAN OR ANIMAL CONSUMPTION.

For Reference Only