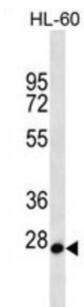


Mediator Complex Subunit 22 (MED22) Antibody

Catalogue No.: abx026952



This gene is located in the surfait gene cluster, a group of very tightly linked housekeeping genes that do not share sequence similarity. The gene is oriented in a head-to-head fashion with RPL7A (SURF3) and the two genes share a bidirectional promoter. The encoded proteins are localized to the cytoplasm. Two alternative transcript variants encoding different isoforms have been identified for this gene.

Target:	Mediator Complex Subunit 22 (MED22)
Clonality:	Polyclonal
Reactivity:	Human
Tested Applications:	ELISA, WB
Host:	Rabbit
Recommended dilutions:	WB: 1/1000. Optimal dilutions/concentrations should be determined by the end user.
Conjugation:	Unconjugated
Immunogen:	KLH-conjugated synthetic peptide between 1-30 amino acids from the N-terminal region of human MED22.
Isotype:	IgG
Form:	Liquid
Purification:	Purified through a protein A column, followed by peptide affinity purification.
Storage:	Aliquot and store at -20°C. Avoid repeated freeze/thaw cycles.
UniProt Primary AC:	Q15528 (UniProt , ExPASy)
KEGG:	hsa:6837

Datasheet

Version: 3.0.0

Revision date: 22 Jun 2025



String: [9606.ENSPO0000482438](#)

Molecular Weight: Calculated MW: 22.2 kDa

Buffer: PBS containing 0.09% sodium azide.

Specificity: Predicted to react with Mouse, Rat and Xenopus MED22.

Note: THIS PRODUCT IS FOR RESEARCH USE ONLY. NOT FOR USE IN DIAGNOSTIC, THERAPEUTIC OR COSMETIC PROCEDURES. NOT FOR HUMAN OR ANIMAL CONSUMPTION.

For Reference Only