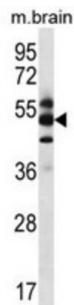


COP9 Signalosome Complex Subunit 1 (GPS1) Antibody

Catalogue No.: abx026967



This gene is known to suppress G-protein and mitogen-activated signal transduction in mammalian cells. The encoded protein shares significant similarity with Arabidopsis FUS6, which is a regulator of light-mediated signal transduction in plant cells. Two alternatively spliced transcript variants encoding different isoforms have been found for this gene. [provided by RefSeq].

Target:	COP9 Signalosome Complex Subunit 1 (GPS1)
Clonality:	Polyclonal
Reactivity:	Mouse
Tested Applications:	ELISA, WB
Host:	Rabbit
Recommended dilutions:	WB: 1/1000. Optimal dilutions/concentrations should be determined by the end user.
Conjugation:	Unconjugated
Immunogen:	KLH-conjugated synthetic peptide between 141-170 amino acids from the Central region of human GPS1.
Isotype:	IgG
Form:	Liquid
Purification:	Purified through a protein A column, followed by peptide affinity purification.
Storage:	Aliquot and store at -20°C. Avoid repeated freeze/thaw cycles.
UniProt Primary AC:	Q13098 (UniProt , ExPASy)
KEGG:	hsa:2873

Datasheet

Version: 3.0.0

Revision date: 25 May 2025



String: [9606.ENSPO0000376167](#)

Molecular Weight: Calculated MW: 55.5 kDa

Buffer: PBS containing 0.09% sodium azide.

Specificity: Predicted to react with Rat and Xenopus GPS1.

Note: THIS PRODUCT IS FOR RESEARCH USE ONLY. NOT FOR USE IN DIAGNOSTIC, THERAPEUTIC OR COSMETIC PROCEDURES. NOT FOR HUMAN OR ANIMAL CONSUMPTION.

For Reference Only