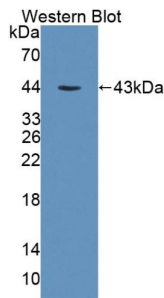
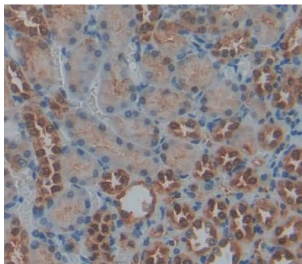


## Protein Kinase, X-Linked (PRKX) Antibody

Catalogue No.: abx131470



Western blot analysis of the recombinant protein.



IHC-P analysis of kidney tissue, with DAB staining.

Protein Kinase, X-Linked Antibody is a Rabbit Polyclonal against Protein Kinase, X-Linked.

**Target:** Protein Kinase, X-Linked (PRKX)**Clonality:** Polyclonal**Reactivity:** Rat**Tested Applications:** WB, IHC, IF/ICC**Host:** Rabbit**Recommended dilutions:** WB: 0.01-2 µg/ml, IHC: 5-20 µg/ml, IF/ICC: 5-20 µg/ml. Optimal dilutions/concentrations should be determined by the end user.**Conjugation:** Unconjugated**Immunogen:** PRKX (Trp49-Phe358)**Form:** Liquid**Purification:** Purified by antigen-specific affinity chromatography, followed by Protein A affinity chromatography.**Storage:** Aliquot and store at -20°C. Avoid repeated freeze/thaw cycles.

# Datasheet

Version: 2.0.0

Revision date: 16 Jul 2025



**UniProt Primary AC:** Q5BK52 ([UniProt](#), [ExPASy](#))

**String:** [10116.ENSRNOP00000004920](#)

**Buffer:** 0.01 M PBS, pH 7.4, containing 0.05% Proclin-300, 50% glycerol.

**Note:** THIS PRODUCT IS FOR RESEARCH USE ONLY. NOT FOR USE IN DIAGNOSTIC, THERAPEUTIC OR COSMETIC PROCEDURES. NOT FOR HUMAN OR ANIMAL CONSUMPTION.

For Reference Only