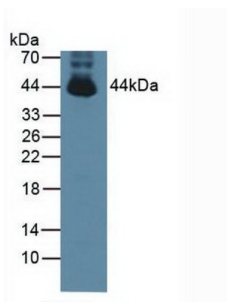
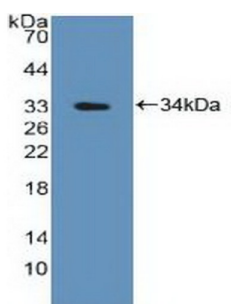


Protein Tyrosine Phosphatase, Non Receptor Type 2 (PTPN2) Antibody

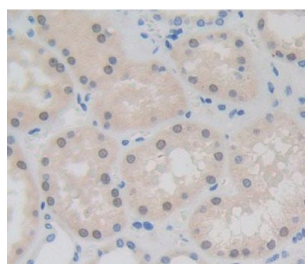
Catalogue No.: abx131522



Western blot analysis of Mouse Testis Tissue.



Western blot analysis of recombinant Human PTPN2.



IHC-P analysis of kidney tissue, with DAB staining.

PTPN2 Antibody is a Rabbit Polyclonal against PTPN2.

Target: Protein Tyrosine Phosphatase, Non Receptor Type 2 (PTPN2)

Clonality: Polyclonal

Reactivity: Human

Tested Applications: WB, IHC, IF/ICC

Host: Rabbit

Recommended dilutions: WB: 1-5 µg/ml, IHC: 5-20 µg/ml, IF/ICC: 5-20 µg/ml. Optimal dilutions/concentrations should be determined by the end user.

Conjugation: Unconjugated

Datasheet

Version: 3.0.0

Revision date: 04 Aug 2025



Immunogen: PTPN2 (Met1-Gly257)

Form: Liquid

Purification: Purified by antigen-specific affinity chromatography, followed by Protein A affinity chromatography.

Storage: Aliquot and store at -20°C. Avoid repeated freeze/thaw cycles.

Buffer: 0.01 M PBS, pH 7.4, containing 0.05% Proclin-300, 50% glycerol.

Note: THIS PRODUCT IS FOR RESEARCH USE ONLY. NOT FOR USE IN DIAGNOSTIC, THERAPEUTIC OR COSMETIC PROCEDURES. NOT FOR HUMAN OR ANIMAL CONSUMPTION.

For Reference Only