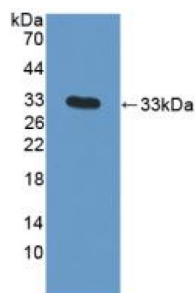
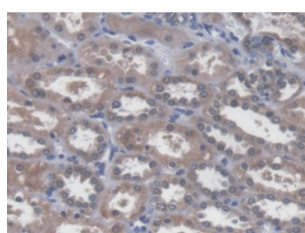


Snail Family Transcriptional Repressor 1 / SNAIL (SNAI1) Antibody

Catalogue No.: abx131592



Western blot analysis of recombinant Human SNAI1.



IHC-P analysis of Human Kidney Tissue, with DAB staining.

Snail Homolog 1 Antibody is a Rabbit Polyclonal against Snail Homolog 1.

Target:	Snail Family Transcriptional Repressor 1 / SNAIL (SNAI1)
Clonality:	Polyclonal
Reactivity:	Human
Tested Applications:	WB, IHC, IF/ICC
Host:	Rabbit
Recommended dilutions:	WB: 0.01-2 µg/ml, IHC: 5-20 µg/ml, IF/ICC: 5-20 µg/ml. Optimal dilutions/concentrations should be determined by the end user.
Conjugation:	Unconjugated
Immunogen:	SNAI1 (Met1-Arg264)
Form:	Liquid
Purification:	Purified by antigen-specific affinity chromatography, followed by Protein A affinity chromatography.
Storage:	Aliquot and store at -20°C. Avoid repeated freeze/thaw cycles.

Datasheet

Version: 3.0.0

Revision date: 10 Sep 2025



UniProt Primary AC: O95863 ([UniProt](#), [ExPASy](#))

KEGG: hsa:6615

String: [9606.ENSP00000244050](#)

Buffer: 0.01 M PBS, pH 7.4, containing 0.05% Proclin-300, 50% glycerol.

Note: THIS PRODUCT IS FOR RESEARCH USE ONLY. NOT FOR USE IN DIAGNOSTIC, THERAPEUTIC OR COSMETIC PROCEDURES. NOT FOR HUMAN OR ANIMAL CONSUMPTION.

For Reference Only