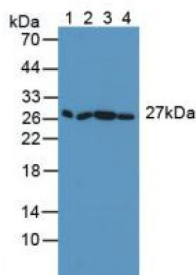
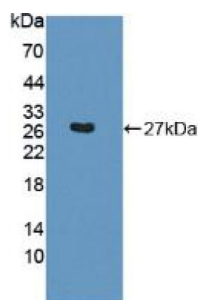


Synaptosomal Associated Protein 23 kDa (SNAP23) Antibody

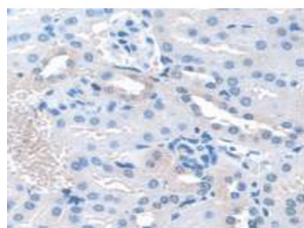
Catalogue No.: abx131595



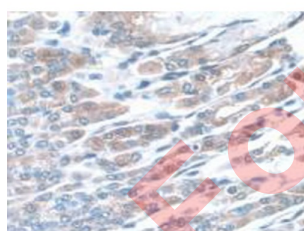
Western blot analysis of (1) Mouse Serum, (2) Mouse Placenta Tissue, (3) Mouse Lung Tissue and (4) Mouse HeLa cells.



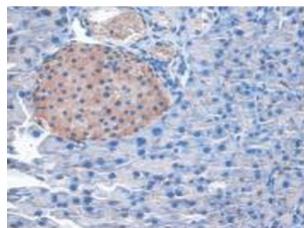
Western blot analysis of recombinant Mouse SNAP23.



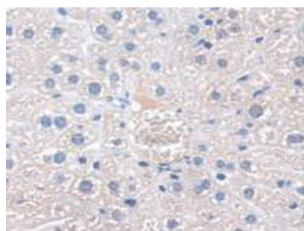
IHC-P analysis of Mouse Kidney Tissue, with DAB staining.



IHC-P analysis of Mouse Stomach Tissue, with DAB staining.



IHC-P analysis of Mouse Pancreas Tissue, with DAB staining.



IHC-P analysis of Mouse Liver Tissue, with DAB staining.

SNAP23 Antibody is a Rabbit Polyclonal against SNAP23.

Target:	Synaptosomal Associated Protein 23 kDa (SNAP23)
Clonality:	Polyclonal
Reactivity:	Mouse
Tested Applications:	WB, IHC, IF/ICC
Host:	Rabbit
Recommended dilutions:	WB: 0.01-2 µg/ml, IHC: 5-20 µg/ml, IF/ICC: 5-20 µg/ml. Optimal dilutions/concentrations should be determined by the end user.
Conjugation:	Unconjugated
Immunogen:	SNAP23 (Met1-Ser210)
Form:	Liquid
Purification:	Purified by antigen-specific affinity chromatography, followed by Protein A affinity chromatography.
Storage:	Aliquot and store at -20°C. Avoid repeated freeze/thaw cycles.
Buffer:	0.01 M PBS, pH 7.4, containing 0.05% Proclin-300, 50% glycerol.
Note:	THIS PRODUCT IS FOR RESEARCH USE ONLY. NOT FOR USE IN DIAGNOSTIC, THERAPEUTIC OR COSMETIC PROCEDURES. NOT FOR HUMAN OR ANIMAL CONSUMPTION.