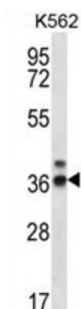


Ribonuclease P Protein Subunit p38 (RPP38) Antibody

Catalogue No.: abx026988



Component of ribonuclease P, a protein complex that generates mature tRNA molecules by cleaving their 5'-ends. RPP38 may associate transiently with RNase P RNA as a factor involved in the transport of H1 RNA to the putative site of its assembly in the cell, the nucleolus.

Target: Ribonuclease P Protein Subunit p38 (RPP38)

Clonality: Polyclonal

Reactivity: Human

Tested Applications: ELISA, WB

Host: Rabbit

Recommended dilutions: WB: 1/1000. Optimal dilutions/concentrations should be determined by the end user.

Conjugation: Unconjugated

Immunogen: KLH-conjugated synthetic peptide between 248-277 amino acids from the C-terminal region of human RPP38.

Isotype: IgG

Form: Liquid

Purification: Purified through a protein A column, followed by peptide affinity purification.

Storage: Aliquot and store at -20°C. Avoid repeated freeze/thaw cycles.

UniProt Primary AC: P78345 ([UniProt](#), [ExPASy](#))

Gene Symbol: RPP38

Datasheet

Version: 4.0.0
Revision date: 29 Jul 2025



GeneID: [10557](#)

OMIM: [606116](#)

HGNC: 30329

KEGG: hsa:10557

Ensembl: ENSG00000152464

String: [9606.ENSP00000478982](#)

Molecular Weight: Calculated MW: 31.8 kDa

Buffer: PBS containing 0.09% sodium azide.

Specificity: Predicted to react with Cow RPP38.

Note: THIS PRODUCT IS FOR RESEARCH USE ONLY. NOT FOR USE IN DIAGNOSTIC, THERAPEUTIC OR COSMETIC PROCEDURES. NOT FOR HUMAN OR ANIMAL CONSUMPTION.

For Reference Only