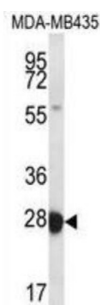
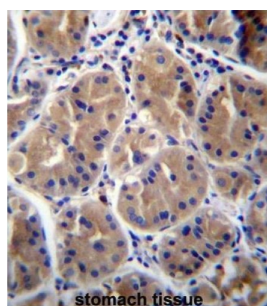


RAB27B, Member RAS Oncogene Family (RAB27B) Antibody

Catalogue No.: abx026989



Members of the Rab protein family, including RAB27B, are prenylated, membrane-bound proteins involved in vesicular fusion and trafficking (Chen et al., 1997 [PubMed 9066979]).[supplied by OMIM].

Target:	RAB27B, Member RAS Oncogene Family (RAB27B)
Clonality:	Polyclonal
Reactivity:	Human
Tested Applications:	ELISA, WB, IHC
Host:	Rabbit
Recommended dilutions:	WB: 1/1000, IHC-P: 1/10 - 1/50. Not tested in IHC-F. Optimal dilutions/concentrations should be determined by the end user.
Conjugation:	Unconjugated
Immunogen:	KLH-conjugated synthetic peptide between 121-150 amino acids from the Central region of human RAB27B.
Isotype:	IgG
Form:	Liquid

Datasheet

Version: 2.0.0

Revision date: 19 Aug 2025



Purification:	Purified through a protein A column, followed by peptide affinity purification.
Storage:	Aliquot and store at -20°C. Avoid repeated freeze/thaw cycles.
UniProt Primary AC:	O00194 (UniProt , ExPASy)
Gene Symbol:	RAB27B
KEGG:	hsa:5874
String:	9606.ENSP00000262094
Molecular Weight:	Calculated MW: 24.6 kDa
Buffer:	PBS containing 0.09% sodium azide.
Specificity:	Predicted to react with Mouse RAB27B.
Note:	THIS PRODUCT IS FOR RESEARCH USE ONLY. NOT FOR USE IN DIAGNOSTIC, THERAPEUTIC OR COSMETIC PROCEDURES. NOT FOR HUMAN OR ANIMAL CONSUMPTION.

For Reference Only