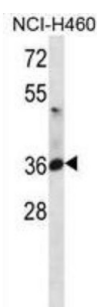
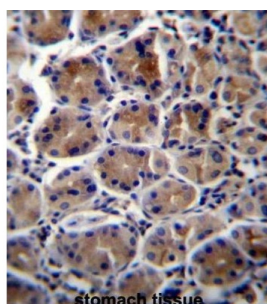


ATPase, Na⁺/K⁺ Transporting Beta 3 Polypeptide (ATP1B3) Antibody

Catalogue No.: abx026991



The protein encoded by this gene belongs to the family of Na⁺/K⁺ and H⁺/K⁺ ATPases beta chain proteins, and to the subfamily of Na⁺/K⁺ ATPases. Na⁺/K⁺ ATPase is an integral membrane protein responsible for establishing and maintaining the electrochemical gradients of Na and K ions across the plasma membrane. These gradients are essential for osmoregulation, for sodium-coupled transport of a variety of organic and inorganic molecules, and for electrical excitability of nerve and muscle. This enzyme is composed of two subunits, a large catalytic subunit (alpha) and a smaller glycoprotein subunit (beta). The beta subunit regulates, through assembly of alpha/beta heterodimers, the number of sodium pumps transported to the plasma membrane. The glycoprotein subunit of Na⁺/K⁺ ATPase is encoded by multiple genes. This gene encodes a beta 3 subunit. This gene encodes a beta 3 subunit. A pseudogene exists for this gene, and it is located on chromosome 2. [provided by RefSeq].

Target: ATPase, Na⁺/K⁺ Transporting Beta 3 Polypeptide (ATP1B3)

Clonality: Polyclonal

Reactivity: Human

Tested Applications: ELISA, WB, IHC

Host: Rabbit

Recommended dilutions: WB: 1/1000, IHC-P: 1/10 - 1/50. Not tested in IHC-F. Optimal dilutions/concentrations should be determined by the end user.

Conjugation: Unconjugated

Immunogen: KLH-conjugated synthetic peptide between 241-270 amino acids from the C-terminal region of human ATP1B3.

Datasheet

Version: 2.0.0
Revision date: 04 Oct 2025



Isotype:	IgG
Form:	Liquid
Purification:	Purified through a protein A column, followed by peptide affinity purification.
Storage:	Aliquot and store at -20°C. Avoid repeated freeze/thaw cycles.
UniProt Primary AC:	P54709 (UniProt , ExPASy)
KEGG:	hsa:483
String:	9606.ENSP00000286371
Molecular Weight:	Calculated MW: 31.5 kDa
Buffer:	PBS containing 0.09% sodium azide.
Note:	THIS PRODUCT IS FOR RESEARCH USE ONLY. NOT FOR USE IN DIAGNOSTIC, THERAPEUTIC OR COSMETIC PROCEDURES. NOT FOR HUMAN OR ANIMAL CONSUMPTION.

For Reference Only