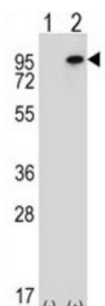


Wolf-Hirschhorn Syndrome Candidate 1-Like Protein (WHSC1L1) Antibody

Catalogue No.: abx027001



This gene is related to the Wolf-Hirschhorn syndrome candidate-1 gene and encodes a protein with PWWP (proline-tryptophan-tryptophan-proline) domains. The function of the protein has not been determined. Two alternatively spliced variants have been described.

Target:	Wolf-Hirschhorn Syndrome Candidate 1-Like Protein (WHSC1L1)
Clonality:	Polyclonal
Reactivity:	Human, Mouse
Tested Applications:	ELISA, WB
Host:	Rabbit
Recommended dilutions:	WB: 1/2000. Optimal dilutions/concentrations should be determined by the end user.
Conjugation:	Unconjugated
Immunogen:	KLH-conjugated synthetic peptide between 188-217 amino acids from the N-terminal region of human WHSC1L1.
Isotype:	IgG
Form:	Liquid
Purification:	Purified Rabbit Polyclonal Antibody.
Storage:	Aliquot and store at -20°C. Avoid repeated freeze/thaw cycles.
UniProt Primary AC:	Q9BZ95 (UniProt , ExPASy)

Datasheet

Version: 3.0.0

Revision date: 26 Aug 2025



String: [9606.ENSF00000313983](#)

Molecular Weight: Calculated MW: 162 kDa

Buffer: PBS containing 0.09% sodium azide.

Note: THIS PRODUCT IS FOR RESEARCH USE ONLY. NOT FOR USE IN DIAGNOSTIC, THERAPEUTIC OR COSMETIC PROCEDURES. NOT FOR HUMAN OR ANIMAL CONSUMPTION.

For Reference Only