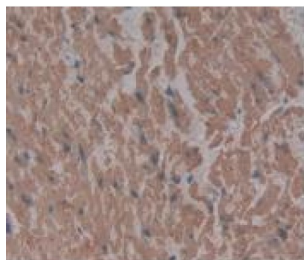
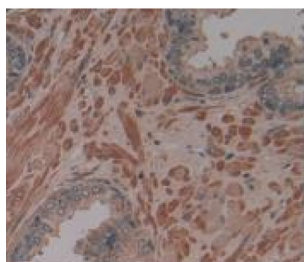


Collagen Type I Alpha 1 (COL1A1) Antibody

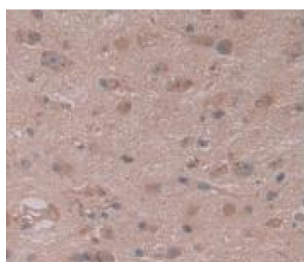
Catalogue No.: abx131809



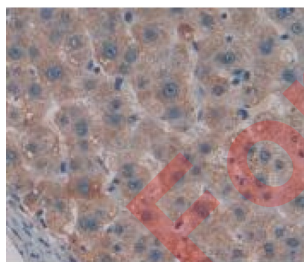
IHC-P analysis of Human Stomach Cancer Tissue, with DAB staining.



IHC-P analysis of Human Prostate Gland Tissue, with DAB staining.



IHC-P analysis of Human Glioma Tissue, with DAB staining.



IHC-P analysis of Human Liver Tissue, with DAB staining.

Collagen Type I Alpha 1 Antibody is a Mouse Monoclonal against Collagen Type I Alpha 1.

Target: Collagen Type I Alpha 1 (COL1A1)

Research Area: Metabolic Pathways

Clonality: Monoclonal

Datasheet

Version: 3.0.0
Revision date: 14 Jun 2025



Reactivity:	Human
Tested Applications:	WB, IHC, IF/ICC
Host:	Mouse
Recommended dilutions:	WB: 0.01-2 µg/ml, IHC: 5-20 µg/ml, IF/ICC: 5-20 µg/ml. Optimal dilutions/concentrations should be determined by the end user.
Conjugation:	Unconjugated
Immunogen:	abx651793 - COL1a1 synthetic peptide conjugated to OVA.
Isotype:	IgG ₁ Kappa
Form:	Liquid
Purification:	Purified by Protein A and Protein G affinity chromatography.
Storage:	Aliquot and store at -20°C. Avoid repeated freeze/thaw cycles.
UniProt Primary AC:	P02452 (UniProt , ExPASy)
KEGG:	hsa:1277
String:	9606.ENSP00000225964
Buffer:	0.01 M PBS, pH 7.4, containing 0.05% Proclin-300, 50% glycerol.
Note:	THIS PRODUCT IS FOR RESEARCH USE ONLY. NOT FOR USE IN DIAGNOSTIC, THERAPEUTIC OR COSMETIC PROCEDURES. NOT FOR HUMAN OR ANIMAL CONSUMPTION.