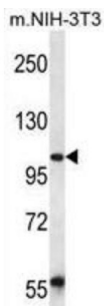
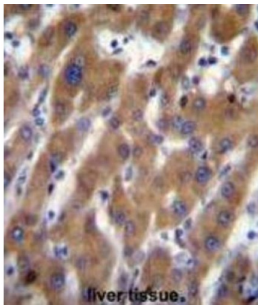


Ubiquitin Associated Protein 2 (UBAP2) Antibody

Catalogue No.: abx027007



This gene is a novel gene isolated based on its expression in the human adrenal gland. The full-length protein encoded by this gene contains a UBA-domain (ubiquitin associated domain), which is a motif found in several proteins having connections to ubiquitin and the ubiquitination pathway. In addition, the protein contains a region similar to a domain found in members of the atrophin-1 family. The function of this protein has not been determined. Additional alternate splice variants may exist, but their full length nature has not been determined.

Target: Ubiquitin Associated Protein 2 (UBAP2)

Clonality: Polyclonal

Reactivity: Human

Tested Applications: ELISA, IHC

Host: Rabbit

Recommended dilutions: IHC-P: 1/10 - 1/50. Not tested in IHC-F. Optimal dilutions/concentrations should be determined by the end user.

Conjugation: Unconjugated

Immunogen: KLH-conjugated synthetic peptide between 144-173 amino acids from the N-terminal region of human UBAP2.

Isotype: IgG

Datasheet

Version: 5.0.0
Revision date: 30 Aug 2025



Form:	Liquid
Purification:	Purified through a protein A column, followed by peptide affinity purification.
Storage:	Aliquot and store at -20°C. Avoid repeated freeze/thaw cycles.
UniProt Primary AC:	Q5T6F2 (UniProt , ExPASy)
KEGG:	hsa:55833
String:	9606.ENSP00000368540
Molecular Weight:	Calculated MW: 117 kDa
Buffer:	PBS containing 0.09% sodium azide.
Note:	THIS PRODUCT IS FOR RESEARCH USE ONLY. NOT FOR USE IN DIAGNOSTIC, THERAPEUTIC OR COSMETIC PROCEDURES. NOT FOR HUMAN OR ANIMAL CONSUMPTION.

For Reference Only