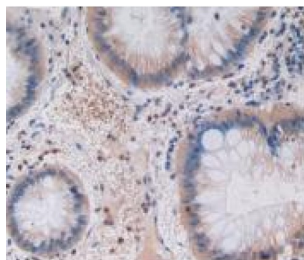
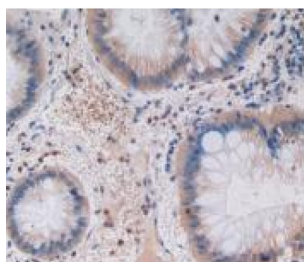


## Gastric Inhibitory Polypeptide (GIP) Antibody

Catalogue No.: abx131965



IHC-P analysis of Rat Rectum Cancer Tissue, with DAB staining.



IHC-P analysis of Rat Rectum Cancer Tissue., with DAB staining.

Gastric Inhibitory Polypeptide Antibody is a Mouse Monoclonal against Gastric Inhibitory Polypeptide.

<b>Target:</b>	Gastric Inhibitory Polypeptide (GIP)
<b>Clonality:</b>	Monoclonal
<b>Reactivity:</b>	Human
<b>Tested Applications:</b>	WB, IHC, IF/ICC
<b>Host:</b>	Mouse
<b>Recommended dilutions:</b>	IHC: 5-20 µg/ml, IF/ICC: 5-20 µg/ml. Optimal dilutions/concentrations should be determined by the end user.
<b>Conjugation:</b>	Unconjugated
<b>Isotype:</b>	IgG <sub>2b</sub> Kappa
<b>Form:</b>	Liquid
<b>Purification:</b>	Purified by Protein A and Protein G affinity chromatography.
<b>Storage:</b>	Aliquot and store at -20°C. Avoid repeated freeze/thaw cycles.

# Datasheet

Version: 3.0.0

Revision date: 06 Oct 2025



**UniProt Primary AC:** P09681 ([UniProt](#), [ExPASy](#))

**KEGG:** hsa:2695

**String:** [9606.ENSP00000350005](#)

**Buffer:** 0.01 M PBS, pH 7.4, containing 0.05% Proclin-300, 50% glycerol.

**Note:** THIS PRODUCT IS FOR RESEARCH USE ONLY. NOT FOR USE IN DIAGNOSTIC, THERAPEUTIC OR COSMETIC PROCEDURES. NOT FOR HUMAN OR ANIMAL CONSUMPTION.

For Reference Only