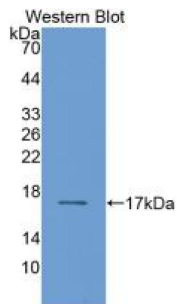


## Retinol Binding Protein 2, Cellular (RBP2) Antibody

Catalogue No.: abx132044



Western blot analysis of recombinant Human RBP2.

Retinol Binding Protein 2, Cellular Antibody is a Mouse Monoclonal against Retinol Binding Protein 2, Cellular.

<b>Target:</b>	Retinol Binding Protein 2, Cellular (RBP2)
<b>Clonality:</b>	Monoclonal
<b>Reactivity:</b>	Human
<b>Tested Applications:</b>	WB, IHC, IF/ICC
<b>Host:</b>	Mouse
<b>Recommended dilutions:</b>	WB: 0.01-5 µg/ml, IHC: 5-30 µg/ml, IF/ICC: 5-30 µg/ml. Optimal dilutions/concentrations should be determined by the end user.
<b>Conjugation:</b>	Unconjugated
<b>Immunogen:</b>	Met1-Lys134
<b>Isotype:</b>	IgG <sub>2b</sub> Kappa
<b>Form:</b>	Liquid
<b>Purification:</b>	Purified by Protein A and Protein G affinity chromatography.
<b>Storage:</b>	Aliquot and store at -20°C. Avoid repeated freeze/thaw cycles.
<b>Buffer:</b>	0.01 M PBS, pH 7.4, containing 0.05% Proclin-300, 50% glycerol.
<b>Note:</b>	THIS PRODUCT IS FOR RESEARCH USE ONLY. NOT FOR USE IN DIAGNOSTIC, THERAPEUTIC OR COSMETIC PROCEDURES. NOT FOR HUMAN OR ANIMAL CONSUMPTION.