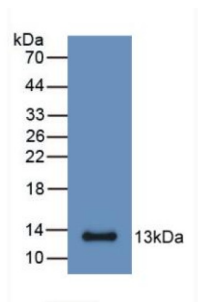
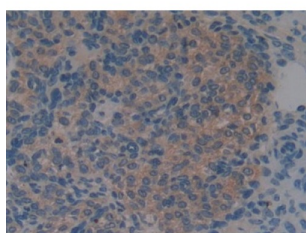


S100 Calcium Binding Protein A6 (S100A6) Antibody

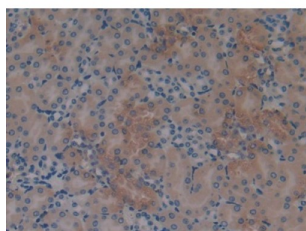
Catalogue No.: abx132055



Western blot analysis of recombinant Mouse S100A6.



IHC-P analysis of Mouse Ovary Tissue, with DAB staining.



IHC-P analysis of Mouse Ovary Tissue, with DAB staining.

S100A6 Antibody is a Rat Monoclonal against S100A6.

Target: S100 Calcium Binding Protein A6 (S100A6)**Clonality:** Monoclonal**Reactivity:** Mouse**Tested Applications:** WB, IHC, IF/ICC**Host:** Rat**Recommended dilutions:** WB: 0.01-5 µg/ml, IHC: 5-30 µg/ml, IF/ICC: 5-30 µg/ml. Optimal dilutions/concentrations should be determined by the end user.**Conjugation:** Unconjugated

Datasheet

Version: 3.0.0

Revision date: 22 Dec 2025



Isotype:	IgG
Form:	Liquid
Purification:	Purified by Protein A and Protein G affinity chromatography.
Storage:	Aliquot and store at -20°C. Avoid repeated freeze/thaw cycles.
UniProt Primary AC:	P14069 (UniProt , ExPASy)
Buffer:	0.01 M PBS, pH 7.4, containing 0.05% Proclin-300, 50% glycerol.
Note:	THIS PRODUCT IS FOR RESEARCH USE ONLY. NOT FOR USE IN DIAGNOSTIC, THERAPEUTIC OR COSMETIC PROCEDURES. NOT FOR HUMAN OR ANIMAL CONSUMPTION.

For Reference Only