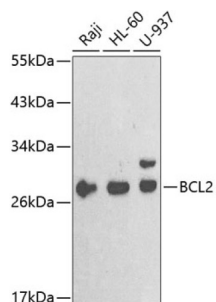
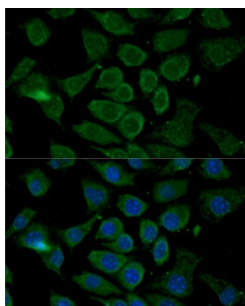


Apoptosis Regulator Bcl-2 (BCL2) Antibody

Catalogue No.: abx002104



Western blot analysis of extracts of various cell lines using Bcl-2 Antibody (1/1000 dilution).



Immunofluorescence analysis of L929 cells using Bcl-2 Antibody (1/100 dilution). Blue: DAPI for nuclear staining.

BCL2 Antibody is a Rabbit Polyclonal antibody against BCL2. This gene encodes an integral outer mitochondrial membrane protein that blocks the apoptotic death of some cells such as lymphocytes. Constitutive expression of BCL2, such as in the case of translocation of BCL2 to Ig heavy chain locus, is thought to be the cause of follicular lymphoma. Two transcript variants, produced by alternate splicing, differ in their C-terminal ends.

Target: Apoptosis Regulator Bcl-2 (BCL2)

Clonality: Polyclonal

Reactivity: Human, Mouse, Rat

Tested Applications: WB, IF/ICC

Host: Rabbit

Recommended dilutions: WB: 1/500 - 1/1000, IF/ICC: 1/50 - 1/100. Optimal dilutions/concentrations should be determined by the end user.

Conjugation: Unconjugated

Immunogen: A synthetic peptide corresponding to human Bcl-2

Isotype: IgG

Form: Liquid

Datasheet

Version: 3.0.0
Revision date: 03 Jul 2025



Purification:	Purified by affinity chromatography.
Storage:	Aliquot and store at -20°C. Avoid repeated freeze/thaw cycles.
UniProt Primary AC:	P10415 (UniProt , ExPASy)
Gene Symbol:	BCL2
GeneID:	596
OMIM:	151430
NCBI Accession:	NP_000624.2
HGNC:	990
KEGG:	hsa:596
Ensembl:	ENSG00000171791
String:	9606.ENSP00000381185
Molecular Weight:	Calculated MW: 22 kDa/26 kDa Observed MW: 27 kDa
Buffer:	PBS, pH 7.3, containing 0.02% sodium azide, 50% glycerol.
Concentration:	1 mg/ml
Note:	THIS PRODUCT IS FOR RESEARCH USE ONLY. NOT FOR USE IN DIAGNOSTIC, THERAPEUTIC OR COSMETIC PROCEDURES. NOT FOR HUMAN OR ANIMAL CONSUMPTION.