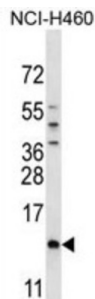


Sperm Mitochondrial-Associated Cysteine-Rich Protein (SMCP) Antibody

Catalogue No.: abx027039



Sperm mitochondria differ in morphology and subcellular localization from those of somatic cells. They are elongated, flattened, and arranged circumferentially to form a helical coiled sheath in the midpiece of the sperm flagellum. The protein encoded by this gene localizes to the capsule associated with the mitochondrial outer membranes and is thought to function in the organization and stabilization of the helical structure of the sperm's mitochondrial sheath.

Target:	Sperm Mitochondrial-Associated Cysteine-Rich Protein (SMCP)
Clonality:	Polyclonal
Reactivity:	Human
Tested Applications:	ELISA, WB
Host:	Rabbit
Recommended dilutions:	WB: 1/1000. Optimal dilutions/concentrations should be determined by the end user.
Conjugation:	Unconjugated
Immunogen:	KLH-conjugated synthetic peptide between 68-97 amino acids from the C-terminal region of human SMCP.
Isotype:	IgG
Form:	Liquid
Purification:	Purified through a protein A column, followed by peptide affinity purification.
Storage:	Aliquot and store at -20°C. Avoid repeated freeze/thaw cycles.
UniProt Primary AC:	P49901 (UniProt , ExPASy)

Datasheet

Version: 3.0.0

Revision date: 06 Mar 2025



KEGG: hsa:4184

String: [9606.ENSP00000357754](#)

Molecular Weight: Calculated MW: 12.8 kDa

Buffer: PBS containing 0.09% sodium azide.

Note: THIS PRODUCT IS FOR RESEARCH USE ONLY. NOT FOR USE IN DIAGNOSTIC, THERAPEUTIC OR COSMETIC PROCEDURES. NOT FOR HUMAN OR ANIMAL CONSUMPTION.

For Reference Only