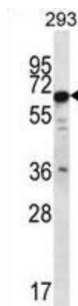
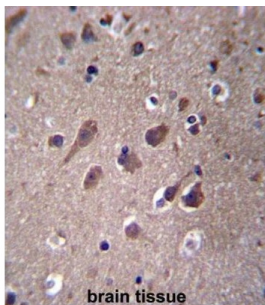


Phosphatase And Actin Regulator 3 (PHACTR3) Antibody

Catalogue No.: abx027046



The protein encoded by this gene is associated with the nuclear scaffold in proliferating cells. It was found to bind to the catalytic subunit of protein phosphatase-1 (PP1) and inhibit PP1 activity, suggesting that this protein may function as a regulatory subunit of PP1. Alternative splicing at this locus results in several transcript variants encoding different isoforms.

Target:	Phosphatase And Actin Regulator 3 (PHACTR3)
Clonality:	Polyclonal
Reactivity:	Human
Tested Applications:	ELISA, WB, IHC
Host:	Rabbit
Recommended dilutions:	WB: 1/1000, IHC-P: 1/10 - 1/50. Not tested in IHC-F. Optimal dilutions/concentrations should be determined by the end user.
Conjugation:	Unconjugated
Immunogen:	KLH-conjugated synthetic peptide between 17-46 amino acids from the N-terminal region of human PHACTR3.
Isotype:	IgG
Form:	Liquid

Datasheet

Version: 1.0.0
Revision date: 23 Jun 2025



Purification:	Purified through a protein A column, followed by peptide affinity purification.
Storage:	Aliquot and store at -20°C. Avoid repeated freeze/thaw cycles.
UniProt Primary AC:	Q96KR7 (UniProt , ExPASy)
Gene Symbol:	PHACTR3
KEGG:	hsa:116154
String:	9606.ENSP00000360054
Molecular Weight:	Calculated MW: 62.6 kDa
Buffer:	PBS containing 0.09% sodium azide.
Note:	THIS PRODUCT IS FOR RESEARCH USE ONLY. NOT FOR USE IN DIAGNOSTIC, THERAPEUTIC OR COSMETIC PROCEDURES. NOT FOR HUMAN OR ANIMAL CONSUMPTION.

For Reference Only