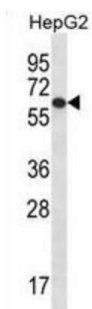
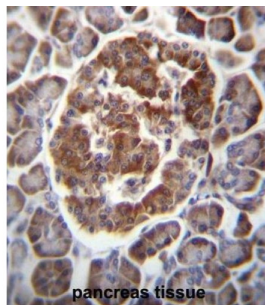


## TBC1 Domain Family Member 22A (TBC1D22A) Antibody

Catalogue No.: abx027056



TBC1D22A may act as a GTPase-activating protein for Rab family protein (s) (By similarity).

**Target:** TBC1 Domain Family Member 22A (TBC1D22A)

**Clonality:** Polyclonal

**Reactivity:** Human

**Tested Applications:** ELISA, WB, IHC

**Host:** Rabbit

**Recommended dilutions:** WB: 1/1000, IHC-P: 1/10 - 1/50. Not tested in IHC-F. Optimal dilutions/concentrations should be determined by the end user.

**Conjugation:** Unconjugated

**Immunogen:** KLH-conjugated synthetic peptide between 447-476 amino acids from the C-terminal region of human TBC1D22A.

**Isotype:** IgG

**Form:** Liquid

**Purification:** Purified through a protein A column, followed by peptide affinity purification.

# Datasheet

Version: 3.0.0

Revision date: 12 Sep 2025



**Storage:** Aliquot and store at -20°C. Avoid repeated freeze/thaw cycles.

**UniProt Primary AC:** Q8WUA7 ([UniProt](#), [ExPASy](#))

**Gene Symbol:** TBC1D22A

**KEGG:** hsa:25771

**String:** [9606.ENSP00000336724](#)

**Molecular Weight:** Calculated MW: 59.1 kDa

**Buffer:** PBS containing 0.09% sodium azide.

**Specificity:** Predicted to react with Monkey TBC1D22A.

**Note:** THIS PRODUCT IS FOR RESEARCH USE ONLY. NOT FOR USE IN DIAGNOSTIC, THERAPEUTIC OR COSMETIC PROCEDURES. NOT FOR HUMAN OR ANIMAL CONSUMPTION.

For Reference Only