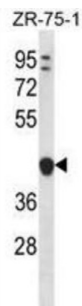
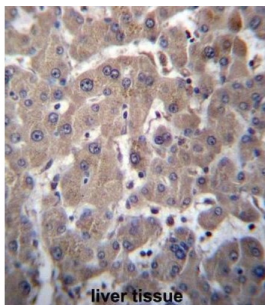


YIP1 Family Member 1 (YIPF1) Antibody

Catalogue No.: abx027061



YIPF1 is a multi-pass membrane protein. It belongs to the YIP1 family. The exact function of YIPF1 remains unknown. There are two named isoforms.

Target: YIP1 Family Member 1 (YIPF1)

Clonality: Polyclonal

Reactivity: Human

Tested Applications: ELISA, WB, IHC

Host: Rabbit

Recommended dilutions: WB: 1/1000, IHC-P: 1/10 - 1/50. Not tested in IHC-F. Optimal dilutions/concentrations should be determined by the end user.

Conjugation: Unconjugated

Immunogen: KLH-conjugated synthetic peptide between 34-63 amino acids from the N-terminal region of human YIPF1.

Isotype: IgG

Form: Liquid

Datasheet

Version: 3.0.0
Revision date: 16 Mar 2025



Purification:	Purified through a protein A column, followed by peptide affinity purification.
Storage:	Aliquot and store at -20°C. Avoid repeated freeze/thaw cycles.
UniProt Primary AC:	Q9Y548 (UniProt , ExPASy)
Gene Symbol:	YIPF1
String:	9606.ENSP00000072644
Molecular Weight:	Calculated MW: 34.3 kDa
Buffer:	PBS containing 0.09% sodium azide.
Note:	THIS PRODUCT IS FOR RESEARCH USE ONLY. NOT FOR USE IN DIAGNOSTIC, THERAPEUTIC OR COSMETIC PROCEDURES. NOT FOR HUMAN OR ANIMAL CONSUMPTION.

For Reference Only