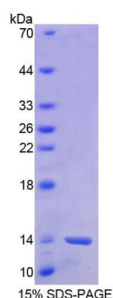
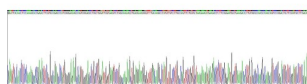


## Human Barrier-To-Autointegration Factor (BANF1) Protein

Catalogue No.: abx168907



SDS-PAGE analysis of recombinant Human Barrier-To-Autointegration Factor (BANF1) Protein.



Gene sequencing extract of recombinant Human Barrier-To-Autointegration Factor (BANF1) Protein.

Human BANF1 Protein is a recombinant Human protein produced in a Prokaryotic expression system (E. coli).

This protein is the immunogen for the following antibodies: [abx130698](#)

**Target:** Barrier-To-Autointegration Factor (BANF1)

**Origin:** Human

**Expression:** Recombinant

**Tested Applications:** WB, SDS-PAGE

**Host:** E. coli

**Conjugation:** Unconjugated

**Form:** Lyophilized

**Purity:** > 95%

# Datasheet

Version: 8.0.0  
Revision date: 01 Jun 2025



<b>Reconstitution:</b>	To keep the original salt concentration, we recommend reconstituting to the original concentration prior to lyophilization (see Concentration) in ddH <sub>2</sub> O. If a lower concentration is required, dilute in 10 mM PBS, pH 7.4. If a higher concentration is required, the product can be reconstituted directly in 10 mM PBS, pH 7.4, though please note that this will change the overall salt concentration. The stock concentration should be between 0.1-1.0 mg/ml. Do not vortex.
<b>Storage:</b>	Store at 2-8 °C for up to one month. Store at -80 °C for up to one year. Avoid repeated freeze/thaw cycles.
<b>UniProt Primary AC:</b>	O75531 ( <a href="#">UniProt</a> , <a href="#">ExPASy</a> )
<b>Gene Symbol:</b>	BANF1
<b>GeneID:</b>	<a href="#">8815</a>
<b>OMIM:</b>	<a href="#">603811</a>
<b>HGNC:</b>	17397
<b>KEGG:</b>	hsa:8815
<b>String:</b>	<a href="#">9606.ENSP00000310275</a>
<b>Molecular Weight:</b>	Calculated MW: 13.6 kDa Observed MW (SDS-PAGE): 14 kDa
<b>Sequence Fragment:</b>	Thr2-Leu89
<b>Sequence:</b>	TTSQKHRDF VAEPMGKEKPV GSLAGIGEV L GKKLEERGFD KAYVVLGQFL VLKKDEDLFR EWLKDT CGAN AKQSRDCFCG LREWCDAFL
<b>Tag:</b>	N-terminal His tag
<b>Buffer:</b>	Prior to lyophilization: PBS, pH 7.4, containing 0.01% Sarcosyl, 5% Trehalose.
<b>Activity:</b>	Not tested
<b>Concentration:</b>	Prior to lyophilization: 300 µg/ml
<b>Note:</b>	THIS PRODUCT IS FOR RESEARCH USE ONLY. NOT FOR USE IN DIAGNOSTIC, THERAPEUTIC OR COSMETIC PROCEDURES. NOT FOR HUMAN OR ANIMAL CONSUMPTION.