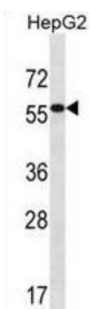
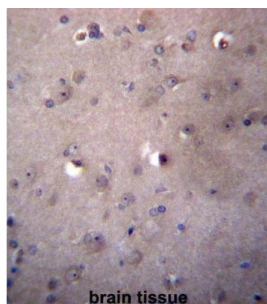


Aldehyde Dehydrogenase 3 Family Member B2 (ALDH3B2) Antibody

Catalogue No.: abx027066



This gene encodes a member of the aldehyde dehydrogenase family, a group of isozymes that may play a major role in the detoxification of aldehydes generated by alcohol metabolism and lipid peroxidation. The gene of this particular family member is over 10 kb in length. The expression of these transcripts is restricted to the salivary gland among the human tissues examined. Alternate transcriptional splice variants have been characterized.

Target: Aldehyde Dehydrogenase 3 Family Member B2 (ALDH3B2)

Clonality: Polyclonal

Reactivity: Human

Tested Applications: ELISA, WB, IHC

Host: Rabbit

Recommended dilutions: WB: 1/1000, IHC-P: 1/10 - 1/50. Not tested in IHC-F. Optimal dilutions/concentrations should be determined by the end user.

Conjugation: Unconjugated

Immunogen: KLH-conjugated synthetic peptide between 252-280 amino acids from the C-terminal region of human ALDH3B2.

Isotype: IgG

Datasheet

Version: 2.0.0

Revision date: 23 May 2025



Form:	Liquid
Purification:	Purified through a protein A column, followed by peptide affinity purification.
Storage:	Aliquot and store at -20°C. Avoid repeated freeze/thaw cycles.
UniProt Primary AC:	P48448 (UniProt , ExPASy)
String:	9606.ENSP00000255084
Molecular Weight:	Calculated MW: 42.6 kDa
Buffer:	PBS containing 0.09% sodium azide.
Note:	THIS PRODUCT IS FOR RESEARCH USE ONLY. NOT FOR USE IN DIAGNOSTIC, THERAPEUTIC OR COSMETIC PROCEDURES. NOT FOR HUMAN OR ANIMAL CONSUMPTION.

For Reference Only