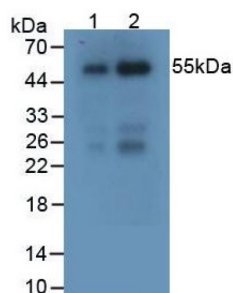


Rabbit Anti-Goat IgG Antibody (HRP)

Catalogue No.: abx400012



Western blot analysis of native Goat IgG Protein, using HRP-conjugated Rabbit Anti-Goat antibody (1/2000 dilution).

Rabbit Anti-Goat IgG Antibody (HRP) is a Rabbit Polyclonal conjugated to HRP against Rabbit IgG.

Target: Goat IgG

Clonality: Polyclonal

Reactivity: Goat

Tested Applications: WB, IHC, IF/ICC

Host: Rabbit

Recommended dilutions: WB: 1/2000 - 1/10000, IHC: 1/200 - 1/1000, IF/ICC: 1/200 - 1/1000. Optimal dilutions/concentrations should be determined by the end user.

Conjugation: HRP

Isotype: IgG

Form: Liquid

Purification: Purified by antigen-specific affinity chromatography.

Storage: Aliquot and store at -20°C. Avoid repeated freeze/thaw cycles.

Buffer: PBS, pH 7.4, containing 0.05% Proclin-300 and 50% glycerol.

Concentration: 0.87 mg/ml

Note: THIS PRODUCT IS FOR RESEARCH USE ONLY. NOT FOR USE IN DIAGNOSTIC, THERAPEUTIC OR COSMETIC PROCEDURES. NOT FOR HUMAN OR ANIMAL CONSUMPTION.