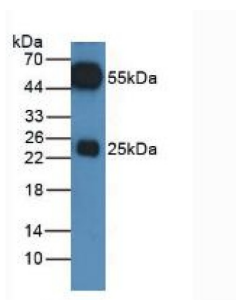


Rabbit Anti-Horse IgG Antibody (HRP)

Catalogue No.: abx400015



Western blot analysis of Horse Serum.

Rabbit Anti-Horse IgG Antibody (HRP) is a Rabbit Polyclonal conjugated to HRP against Horse IgG.

Target: Horse IgG

Clonality: Polyclonal

Reactivity: Horse

Tested Applications: ELISA, WB, IHC, IP

Host: Rabbit

Conjugation: HRP

Isotype: IgG

Form: Liquid

Storage: Aliquot and store at -20°C. Avoid repeated freeze/thaw cycles.

Note: THIS PRODUCT IS FOR RESEARCH USE ONLY. NOT FOR USE IN DIAGNOSTIC, THERAPEUTIC OR COSMETIC PROCEDURES. NOT FOR HUMAN OR ANIMAL CONSUMPTION.