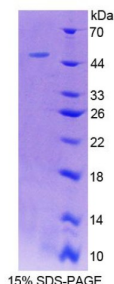


## Rat Ladinin 1 (LAD1) Protein

Catalogue No.: abx650033



SDS-PAGE analysis of Rat LAD1 Protein.

Rat LAD1 Protein is a recombinant Rat protein produced in a Prokaryotic expression system (*E. coli*).

**Target:** Ladinin 1 (LAD1)

**Origin:** Rat

**Expression:** Recombinant

**Tested Applications:** WB, SDS-PAGE

**Host:** *E. coli*

**Conjugation:** Unconjugated

**Form:** Lyophilized

**Purity:** > 90%

**Reconstitution:** To keep the original salt concentration, we recommend reconstituting to the original concentration prior to lyophilization (see Concentration) in ddH<sub>2</sub>O. If a lower concentration is required, dilute in PBS, pH 7.4. If a higher concentration is required, the product can be reconstituted directly in PBS, pH 7.4, though please note that this will change the overall salt concentration. The stock concentration should be between 0.1-1.0 mg/ml. Do not vortex.

**Storage:** Store at 2-8 °C for up to one month. Store at -80 °C for up to one year. Avoid repeated freeze/thaw cycles.

**UniProt Primary AC:** G3V779 ([UniProt](#), [ExPASy](#))

**String:** [10116.ENSARNOP00000012801](#)

**Molecular Weight:** Calculated MW: 45.9 kDa

# Datasheet

Version: 3.0.0

Revision date: 25 Jun 2025



**Sequence Fragment:** Met1-Pro140

**Tag:** N-terminal His tag and GST tag

**Buffer:** Prior to lyophilization: PBS, pH 7.4, containing 0.01% Sarcosyl, 1 mM DTT, 5% Trehalose and Proclin-300.

**Activity:** Not tested

**Concentration:** Prior to lyophilization: 200 µg/ml

**Note:** THIS PRODUCT IS FOR RESEARCH USE ONLY. NOT FOR USE IN DIAGNOSTIC, THERAPEUTIC OR COSMETIC PROCEDURES. NOT FOR HUMAN OR ANIMAL CONSUMPTION.

For Reference Only