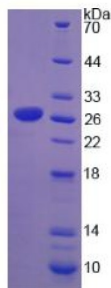


Mouse Sterol Regulatory Element Binding Transcription Factor 1 (SREBF1) Protein

Catalogue No.: abx650222



SDS-PAGE analysis of Mouse SREBF1 Protein.

Mouse SREBF1 Protein is a recombinant Mouse protein produced in a Prokaryotic expression system (E. coli).

This protein is the immunogen for the following antibodies: [abx131610](#)

Target: Sterol Regulatory Element Binding Transcription Factor 1 (SREBF1)

Origin: Mouse

Expression: Recombinant

Tested Applications: WB, SDS-PAGE

Host: E. coli

Conjugation: Unconjugated

Form: Lyophilized

Purity: > 97%

Reconstitution: To keep the original salt concentration, we recommend reconstituting to the original concentration prior to lyophilization (see Concentration) in ddH₂O. If a lower concentration is required, dilute in 20 mM Tris, 150 mM NaCl, pH 8.0. If a higher concentration is required, the product can be reconstituted directly in 20 mM Tris, 150 mM NaCl, pH 8.0, though please note that this will change the overall salt concentration. The stock concentration should be between 0.1-1.0 mg/ml. Do not vortex.

Storage: Store at 2-8 °C for up to one month. Store at -80 °C for up to one year. Avoid repeated freeze/thaw cycles.

UniProt Primary AC: Q9WTN3 ([UniProt](#), [ExPASy](#))

Datasheet

Version: 3.0.0

Revision date: 21 Jun 2025



String: [10090.ENSMUSP00000020846](#)

Molecular Weight: Calculated MW: 27.1 kDa
Observed MW (SDS-PAGE): 27 kDa

Sequence Fragment: Pro158-Leu390

Tag: N-terminal His tag

Buffer: Prior to lyophilization: 20 mM Tris, 150 mM NaCl, pH 8.0, containing 1 mM EDTA, 1 mM DTT, 0.01% Sarcosyl, 5% Trehalose and Proclin-300.

Activity: Not tested

Concentration: Prior to lyophilization: 200 µg/ml

Note: THIS PRODUCT IS FOR RESEARCH USE ONLY. NOT FOR USE IN DIAGNOSTIC, THERAPEUTIC OR COSMETIC PROCEDURES. NOT FOR HUMAN OR ANIMAL CONSUMPTION.

For Reference Only