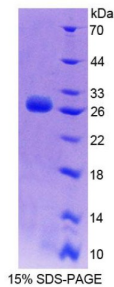


Human Stromal Cell Derived Factor 2 Like Protein 1 (SDF2L1) Protein

Catalogue No.: abx650315



SDS-PAGE analysis of Human SDF2L1 Protein.

Human SDF2L1 Protein is a recombinant Human protein produced in a Prokaryotic expression system (E. coli).

Target:	Stromal Cell Derived Factor 2 Like Protein 1 (SDF2L1)
Origin:	Human
Expression:	Recombinant
Tested Applications:	WB, SDS-PAGE
Host:	E. coli
Conjugation:	Unconjugated
Form:	Lyophilized
Activity:	Not tested
Purity:	> 95%
Reconstitution:	To keep the original salt concentration, we recommend reconstituting to the original concentration prior to lyophilization (see Concentration) in ddH ₂ O. If a lower concentration is required, dilute in PBS, pH 7.4. If a higher concentration is required, the product can be reconstituted directly in PBS, pH 7.4, though please note that this will change the overall salt concentration. The stock concentration should be between 0.1-1.0 mg/ml. Do not vortex.
Storage:	Store at 2-8°C for up to one month. For long-term storage, store at -80°C. Avoid repeated freeze/thaw cycles.
UniProt Primary AC:	Q9HCN8 (UniProt , ExPASy)
String:	9606.ENSP00000248958

Datasheet

Version: 3.0.0

Revision date: 17 Oct 2025



Molecular Weight: Calculated MW: 23.8 kDa

Sequence Fragment: Ala29-Glu213

Tag: N-terminal His tag

Buffer: Prior to lyophilization: PBS, pH 7.4, containing 0.01% Sarcosyl, 1 mM DTT, 5% Trehalose and Proclin-300.

Concentration: Prior to lyophilization: 200 µg/ml

Note: THIS PRODUCT IS FOR RESEARCH USE ONLY. NOT FOR USE IN DIAGNOSTIC, THERAPEUTIC OR COSMETIC PROCEDURES. NOT FOR HUMAN OR ANIMAL CONSUMPTION.

For Reference Only