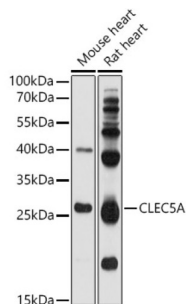


C-Type Lectin Domain Containing 5A (CLEC5A) Antibody

Catalogue No.: abx002111



Western blot analysis of extracts of various cell lines using CLEC5A Antibody (1/1000 dilution).

CLEC5A Antibody is a Rabbit Polyclonal antibody against CLEC5A. This gene encodes a member of the C-type lectin/C-type lectin-like domain (CTL/CTLD) superfamily. Members of this family share a common protein fold and have diverse functions, such as cell adhesion, cell-cell signalling, glycoprotein turnover, and roles in inflammation and immune response. The encoded type II transmembrane protein interacts with dnax-activation protein 12 and may play a role in cell activation. Alternative splice variants have been described but their full-length sequence has not been determined.

Target: C-Type Lectin Domain Containing 5A (CLEC5A)

Clonality: Polyclonal

Reactivity: Human, Mouse, Rat

Tested Applications: WB

Host: Rabbit

Recommended dilutions: WB: 1/1000 - 1/2000. Optimal dilutions/concentrations should be determined by the end user.

Conjugation: Unconjugated

Immunogen: Recombinant fusion protein corresponding to human CLEC5A

Isotype: IgG

Form: Liquid

Purification: Purified by affinity chromatography.

Storage: Aliquot and store at -20°C. Avoid repeated freeze/thaw cycles.

UniProt Primary AC: Q9NY25 ([UniProt](#), [ExPASy](#))

Datasheet

Version: 4.0.0
Revision date: 04 Jun 2025



Gene Symbol: CLEC5A

GeneID: [23601](#)

NCBI Accession: NP_037384.1

String: [9606.ENSP00000449999](#)

Molecular Weight: Calculated MW: 21 kDa
Observed MW: 20 kDa

Buffer: PBS, pH 7.3, containing 0.02% sodium azide, 50% glycerol.

Concentration: 1 mg/ml

Note: THIS PRODUCT IS FOR RESEARCH USE ONLY. NOT FOR USE IN DIAGNOSTIC, THERAPEUTIC OR COSMETIC PROCEDURES. NOT FOR HUMAN OR ANIMAL CONSUMPTION.

For Reference Only