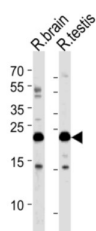
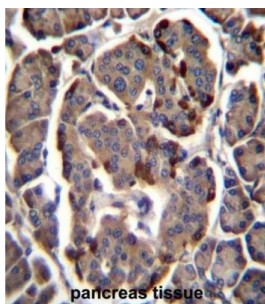


RAB11B, Member RAS Oncogene Family (RAB11B) Antibody

Catalogue No.: abx027108



The Ras superfamily of small GTP-binding proteins, which includes the Ras (see MIM 190020), Ral (see MIM 179550), Rho (see MIM 165390), Rap (see MIM 179520), and Rab (see MIM 179508) families, is involved in controlling a diverse set of essential cellular functions. The Rab family, including RAB11B, appears to play a critical role in regulating exocytotic and endocytotic pathways (summary by Zhu et al., 1994 [PubMed 7811277]).[supplied by OMIM].

Target: RAB11B, Member RAS Oncogene Family (RAB11B)

Clonality: Polyclonal

Reactivity: Human, Rat

Tested Applications: ELISA, WB, IHC

Host: Rabbit

Recommended dilutions: WB: 1/1000, IHC-P: 1/10 - 1/50. Not tested in IHC-F. Optimal dilutions/concentrations should be determined by the end user.

Conjugation: Unconjugated

Immunogen: KLH-conjugated synthetic peptide between 164-193 amino acids from the C-terminal region of human RAB11B.

Isotype: IgG

Datasheet

Version: 3.0.0

Revision date: 05 Mar 2025



Form:	Liquid
Purification:	Purified through a protein A column, followed by peptide affinity purification.
Storage:	Aliquot and store at -20°C. Avoid repeated freeze/thaw cycles.
UniProt Primary AC:	Q15907 (UniProt , ExPASy)
NCBI Accession:	NP_004209.2
KEGG:	hsa:9230
String:	9606.ENSP00000333547
Molecular Weight:	Calculated MW: 24.5 kDa
Buffer:	PBS containing 0.09% sodium azide.
Specificity:	Predicted to react with Mouse and Cow RAB11B.
Note:	THIS PRODUCT IS FOR RESEARCH USE ONLY. NOT FOR USE IN DIAGNOSTIC, THERAPEUTIC OR COSMETIC PROCEDURES. NOT FOR HUMAN OR ANIMAL CONSUMPTION.

For Reference Only