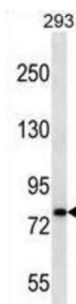
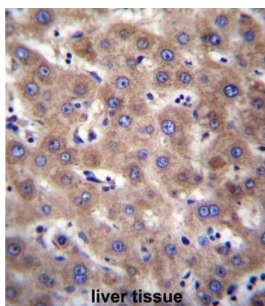


Cadherin 19 (CDH19) Antibody

Catalogue No.: abx027110



WB analysis of 293 cell line lysates (35 µg/lane), using CDH19 antibody for the detection of CDH19 protein.



IHC-P analysis of Human liver tissue, using CDH19 antibody.

This gene is a type II classical cadherin from the cadherin superfamily and one of three cadherin 7-like genes located in a cluster on chromosome 18. The encoded membrane protein is a calcium dependent cell-cell adhesion glycoprotein comprised of five extracellular cadherin repeats, a transmembrane region and a highly conserved cytoplasmic tail. Type II (atypical) cadherins are defined based on their lack of a HAV cell adhesion recognition sequence specific to type I cadherins. Since disturbance of intracellular adhesion is a prerequisite for invasion and metastasis of tumor cells, cadherins are considered prime candidates for tumor suppressor genes.

Target: Cadherin 19 (CDH19)

Clonality: Polyclonal

Reactivity: Human

Tested Applications: ELISA, WB, IHC

Host: Rabbit

Recommended dilutions: WB: 1/1000, IHC-P: 1/10 - 1/50. Not tested in IHC-F. Optimal dilutions/concentrations should be determined by the end user.

Conjugation: Unconjugated

Immunogen: KLH-conjugated synthetic peptide between 613-640 amino acids from the C-terminal region of human CDH19.

Isotype: IgG

Datasheet

Version: 3.0.0

Revision date: 13 Sep 2025



Form:	Liquid
Purification:	Purified through a protein A column, followed by peptide affinity purification.
Storage:	Aliquot and store at -20°C. Avoid repeated freeze/thaw cycles.
UniProt Primary AC:	Q9H159 (UniProt , ExPASy)
Gene Symbol:	CDH19
GeneID:	28513
String:	9606.ENSP00000262150
Molecular Weight:	Calculated MW: 87 kDa
Buffer:	PBS containing 0.09% sodium azide.
Concentration:	0.5 mg/ml
Note:	THIS PRODUCT IS FOR RESEARCH USE ONLY. NOT FOR USE IN DIAGNOSTIC, THERAPEUTIC OR COSMETIC PROCEDURES. NOT FOR HUMAN OR ANIMAL CONSUMPTION.

For Reference Only