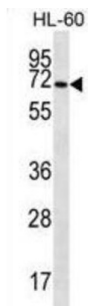
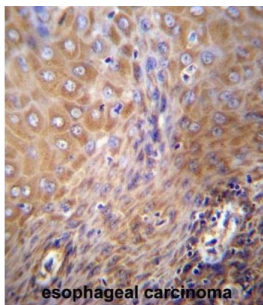


Solute Carrier Family 6 Member 14 (SLC6A14) Antibody

Catalogue No.: abx027124



This gene encodes a member of the solute carrier family 6. Members of this family are sodium and chloride dependent neurotransmitter transporters. The encoded protein transports both neutral and cationic amino acids. This protein may also function as a beta-alanine carrier. Mutations in this gene may be associated with X-linked obesity. A pseudogene of this gene is found on chromosome X.

Target: Solute Carrier Family 6 Member 14 (SLC6A14)

Clonality: Polyclonal

Reactivity: Human

Tested Applications: ELISA, WB, IHC

Host: Rabbit

Recommended dilutions: WB: 1/1000, IHC-P: 1/500. Not tested in IHC-F. Optimal dilutions/concentrations should be determined by the end user.

Conjugation: Unconjugated

Immunogen: KLH-conjugated synthetic peptide between 602-631 amino acids from the C-terminal region of human SLC6A14.

Isotype: IgG

Datasheet

Version: 4.0.0
Revision date: 06 Mar 2025



| | |
|----------------------------|--|
| Form: | Liquid |
| Purification: | Purified through a protein A column, followed by peptide affinity purification. |
| Storage: | Aliquot and store at -20°C. Avoid repeated freeze/thaw cycles. |
| UniProt Primary AC: | Q9UN76 (UniProt , ExPASy) |
| Gene Symbol: | SLC6A14 |
| String: | 9606.ENSP00000470801 |
| Molecular Weight: | Calculated MW: 72.2 kDa |
| Buffer: | PBS containing 0.09% sodium azide. |
| Note: | THIS PRODUCT IS FOR RESEARCH USE ONLY. NOT FOR USE IN DIAGNOSTIC, THERAPEUTIC OR COSMETIC PROCEDURES. NOT FOR HUMAN OR ANIMAL CONSUMPTION. |

For Reference Only