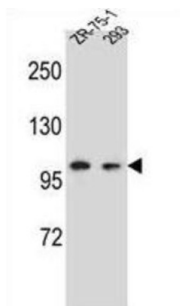
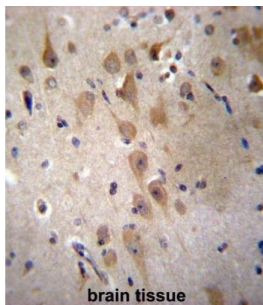


Glutamate Receptor-Interacting Protein 2 (GRIP2) Antibody

Catalogue No.: abx027125



GRIP2 may play a role as a localized scaffold for the assembly of a multiprotein signaling complex and as mediator of the trafficking of its binding partners at specific subcellular location in neurons (By similarity).

Target:	Glutamate Receptor-Interacting Protein 2 (GRIP2)
Clonality:	Polyclonal
Reactivity:	Human
Tested Applications:	ELISA, WB, IHC
Host:	Rabbit
Recommended dilutions:	WB: 1/1000, IHC-P: 1/10 - 1/50. Not tested in IHC-F. Optimal dilutions/concentrations should be determined by the end user.
Conjugation:	Unconjugated
Immunogen:	KLH-conjugated synthetic peptide between 620-649 amino acids from the Central region of human GRIP2.
Isotype:	IgG
Form:	Liquid

Datasheet

Version: 3.0.0
Revision date: 21 May 2025



Purification:	Purified through a protein A column, followed by peptide affinity purification.
Storage:	Aliquot and store at -20°C. Avoid repeated freeze/thaw cycles.
UniProt Primary AC:	Q9C0E4 (UniProt , ExPASy)
Gene Symbol:	GRIP2
String:	9606.ENSP00000480660
Molecular Weight:	Calculated MW: 113 kDa
Buffer:	PBS containing 0.09% sodium azide.
Note:	THIS PRODUCT IS FOR RESEARCH USE ONLY. NOT FOR USE IN DIAGNOSTIC, THERAPEUTIC OR COSMETIC PROCEDURES. NOT FOR HUMAN OR ANIMAL CONSUMPTION.

For Reference Only