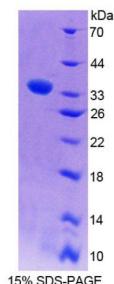


Rat Phospholipase C Epsilon 1 (PLCe1) Protein

Catalogue No.: abx650498



SDS-PAGE analysis of recombinant Rat PLCe1 Protein.

Rat PLCe1 Protein is a recombinant Rat protein produced in a Prokaryotic expression system (E. coli).

This protein is the immunogen for the following antibodies: [abx178012](#)

Target: Phospholipase C Epsilon 1 (PLCe1)

Origin: Rat

Expression: Recombinant

Tested Applications: WB, SDS-PAGE

Host: E. coli

Conjugation: Unconjugated

Form: Lyophilized

Activity: Not tested

Purity: > 90%

Reconstitution: To keep the original salt concentration, we recommend reconstituting to the original concentration prior to lyophilization (see Concentration) in ddH₂O. If a lower concentration is required, dilute in PBS, pH 7.4. If a higher concentration is required, the product can be reconstituted directly in PBS, pH 7.4, though please note that this will change the overall salt concentration. The stock concentration should be between 0.1-1.0 mg/ml. Do not vortex.

Storage: Store at 2-8°C for up to one month. For long-term storage, store at -80°C. Avoid repeated freeze/thaw cycles.

UniProt Primary AC: Q99P84 ([UniProt](#), [ExPASy](#))

Datasheet

Version: 4.0.0

Revision date: 09 Oct 2025



String: [10116.ENSRNOP00000062667](#)

Molecular Weight: Calculated MW: 31.0 kDa

Sequence Fragment: Met1-Lys250

Tag: N-terminal His tag

Buffer: Prior to lyophilization: PBS, pH 7.4, containing 0.01% Sarcosyl, 1 mM DTT, 5% Trehalose and Proclin-300.

Concentration: Prior to lyophilization: 200 µg/ml

Note: THIS PRODUCT IS FOR RESEARCH USE ONLY. NOT FOR USE IN DIAGNOSTIC, THERAPEUTIC OR COSMETIC PROCEDURES. NOT FOR HUMAN OR ANIMAL CONSUMPTION.

For Reference Only