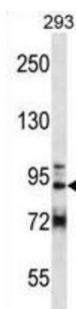
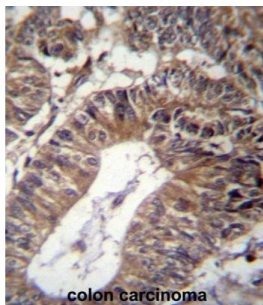


GRIP And Coiled-Coil Domain Containing 1 (GCC1) Antibody

Catalogue No.: abx027129



The protein encoded by this gene is a peripheral membrane protein. It is sensitive to brefeldin A. This encoded protein contains a GRIP domain which is thought to be used in targeting. It may play a role in the organization of trans-Golgi network subcompartment involved with membrane transport. [provided by RefSeq].

Target: GRIP And Coiled-Coil Domain Containing 1 (GCC1)

Clonality: Polyclonal

Reactivity: Human

Tested Applications: ELISA, WB, IHC

Host: Rabbit

Recommended dilutions: WB: 1/1000, IHC-P: 1/10 - 1/50. Not tested in IHC-F. Optimal dilutions/concentrations should be determined by the end user.

Conjugation: Unconjugated

Immunogen: KLH-conjugated synthetic peptide between 671-700 amino acids from the C-terminal region of human GCC1.

Isotype: IgG

Form: Liquid

Datasheet

Version: 3.0.0
Revision date: 22 Jun 2025



Purification:	Purified through a protein A column, followed by peptide affinity purification.
Storage:	Aliquot and store at -20°C. Avoid repeated freeze/thaw cycles.
UniProt Primary AC:	Q96CN9 (UniProt , ExPASy)
KEGG:	hsa:79571
String:	9606.ENSP00000318821
Molecular Weight:	Calculated MW: 87.8 kDa
Buffer:	PBS containing 0.09% sodium azide.
Note:	THIS PRODUCT IS FOR RESEARCH USE ONLY. NOT FOR USE IN DIAGNOSTIC, THERAPEUTIC OR COSMETIC PROCEDURES. NOT FOR HUMAN OR ANIMAL CONSUMPTION.

For Reference Only