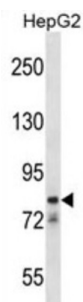


Cation Channel Sperm Associated 1 (CATSPER1) Antibody

Catalogue No.: abx027137



Calcium ions play a primary role in the regulation of sperm motility. This gene belongs to a family of putative cation channels that are specific to spermatozoa and localize to the flagellum. The protein family features a single repeat with six membrane-spanning segments and a predicted calcium-selective pore region.

Target:	Cation Channel Sperm Associated 1 (CATSPER1)
Clonality:	Polyclonal
Reactivity:	Human
Tested Applications:	ELISA, WB
Host:	Rabbit
Recommended dilutions:	WB: 1/1000. Optimal dilutions/concentrations should be determined by the end user.
Conjugation:	Unconjugated
Immunogen:	KLH-conjugated synthetic peptide between 36-65 amino acids from the N-terminal region of human CATSPER1.
Isotype:	IgG
Form:	Liquid
Purification:	Purified through a protein A column, followed by peptide affinity purification.
Storage:	Aliquot and store at -20°C. Avoid repeated freeze/thaw cycles.
UniProt Primary AC:	Q8NEC5 (UniProt , ExPASy)
Gene Symbol:	CATSPER1

Datasheet

Version: 2.0.0

Revision date: 02 Jun 2025



KEGG: hsa:117144

String: [9606.ENSP00000309052](#)

Molecular Weight: Calculated MW: 90.1 kDa

Buffer: PBS containing 0.09% sodium azide.

Note: THIS PRODUCT IS FOR RESEARCH USE ONLY. NOT FOR USE IN DIAGNOSTIC, THERAPEUTIC OR COSMETIC PROCEDURES. NOT FOR HUMAN OR ANIMAL CONSUMPTION.

For Reference Only