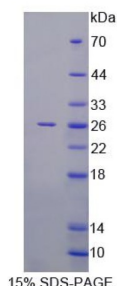


Human RAB1A, Member RAS Oncogene Family (RAB1A) Protein

Catalogue No.: abx650772



SDS-PAGE analysis of Human RAB1A Protein.

Human RAB1A Protein is a recombinant Human protein produced in a Prokaryotic expression system (E. coli).

Target: RAB1A, Member RAS Oncogene Family (RAB1A)

Origin: Human

Expression: Recombinant

Tested Applications: WB, SDS-PAGE

Host: E. coli

Conjugation: Unconjugated

Form: Lyophilized

Activity: Not tested

Purity: > 95%

Reconstitution: To keep the original salt concentration, we recommend reconstituting to the original concentration prior to lyophilization (see Concentration) in ddH₂O. If a lower concentration is required, dilute in PBS, pH 7.4. If a higher concentration is required, the product can be reconstituted directly in PBS, pH 7.4, though please note that this will change the overall salt concentration. The stock concentration should be between 0.1-1.0 mg/ml. Do not vortex.

Storage: Store at 2-8°C for up to one month. For long-term storage, store at -80°C. Avoid repeated freeze/thaw cycles.

UniProt Primary AC: P62820 ([UniProt](#), [ExPASy](#))

KEGG: hsa:5861

Datasheet

Version: 4.0.0

Revision date: 13 Sep 2025



String: [9606.ENSF00000387286](#)

Molecular Weight: Calculated MW: 26.2 kDa
Observed MW (SDS-PAGE): 26 kDa

Sequence Fragment: Ser2-Cys205

Tag: N-terminal His tag

Buffer: Prior to lyophilization: PBS, pH 7.4, containing 0.01% Sarcosyl, 1 mM DTT, 5% Trehalose and Proclin-300.

Concentration: Prior to lyophilization: 200 µg/ml

Note: THIS PRODUCT IS FOR RESEARCH USE ONLY. NOT FOR USE IN DIAGNOSTIC, THERAPEUTIC OR COSMETIC PROCEDURES. NOT FOR HUMAN OR ANIMAL CONSUMPTION.

For Reference Only