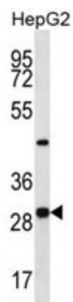


Pyridoxal Phosphate Binding Protein (PROSC) Antibody

Catalogue No.: abx027156



PROSC is ubiquitously expressed in human tissues and has been highly conserved among divergent species from bacteria to mammals, suggesting it has an important cellular function. PROSC is likely to be a soluble cytoplasmic protein, but its function remains to be determined. The *P. aeruginosa* homolog of this novel gene is located upstream of and may be cotranscribed with a known proline biosynthetic gene, hence the human gene was called PROSC, for 'proline synthetase cotranscribed, bacterial homolog'.

Target:	Pyridoxal Phosphate Binding Protein (PROSC)
Clonality:	Polyclonal
Reactivity:	Human
Tested Applications:	ELISA, WB
Host:	Rabbit
Recommended dilutions:	WB: 1/1000. Optimal dilutions/concentrations should be determined by the end user.
Conjugation:	Unconjugated
Immunogen:	KLH-conjugated synthetic peptide between 232-260 amino acids from the C-terminal region of human PROSC.
Isotype:	IgG
Form:	Liquid
Purification:	Purified through a protein A column, followed by peptide affinity purification.
Storage:	Aliquot and store at -20°C. Avoid repeated freeze/thaw cycles.
UniProt Primary AC:	O94903 (UniProt , ExPASy)

Datasheet

Version: 2.0.0

Revision date: 17 Jul 2025



Gene Symbol: PLPBP

KEGG: hsa:11212

String: [9606.ENSP00000333551](#)

Molecular Weight: Calculated MW: 30.3 kDa

Buffer: PBS containing 0.09% sodium azide.

Note: THIS PRODUCT IS FOR RESEARCH USE ONLY. NOT FOR USE IN DIAGNOSTIC, THERAPEUTIC OR COSMETIC PROCEDURES. NOT FOR HUMAN OR ANIMAL CONSUMPTION.

For Reference Only