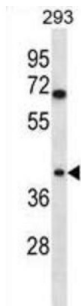
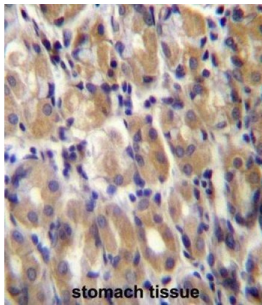


# Datasheet

Version: 2.0.0  
Revision date: 11 Sep 2025

## Torsin 1B (TOR1B) Antibody

Catalogue No.: abx027161



TOR1B may serve as a molecular chaperone assisting in the proper folding of secreted and/or membrane proteins (By similarity).

**Target:** Torsin 1B (TOR1B)

**Clonality:** Polyclonal

**Reactivity:** Human

**Tested Applications:** ELISA, WB, IHC

**Host:** Rabbit

**Recommended dilutions:** WB: 1/1000, IHC-P: 1/10 - 1/50. Not tested in IHC-F. Optimal dilutions/concentrations should be determined by the end user.

**Conjugation:** Unconjugated

**Immunogen:** KLH-conjugated synthetic peptide between 215-243 amino acids from the C-terminal region of human TOR1B.

**Isotype:** IgG

**Form:** Liquid

# Datasheet

Version: 2.0.0  
Revision date: 11 Sep 2025



<b>Purification:</b>	Purified through a protein A column, followed by peptide affinity purification.
<b>Storage:</b>	Aliquot and store at -20°C. Avoid repeated freeze/thaw cycles.
<b>UniProt Primary AC:</b>	O14657 ( <a href="#">UniProt</a> , <a href="#">ExpASY</a> )
<b>Gene Symbol:</b>	TOR1B
<b>KEGG:</b>	hsa:27348
<b>String:</b>	<a href="#">9606.ENSP00000259339</a>
<b>Molecular Weight:</b>	Calculated MW: 38 kDa
<b>Buffer:</b>	PBS containing 0.09% sodium azide.
<b>Note:</b>	THIS PRODUCT IS FOR RESEARCH USE ONLY. NOT FOR USE IN DIAGNOSTIC, THERAPEUTIC OR COSMETIC PROCEDURES. NOT FOR HUMAN OR ANIMAL CONSUMPTION.

For Reference Only