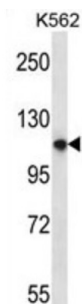


Pleckstrin Homology Domain-Containing Family M Member 1 (PLEKHM1) Antibody

Catalogue No.: abx027171



The protein encoded by this gene is essential for bone resorption, and may play a critical role in vesicular transport in the osteoclast. Mutations in this gene are associated with autosomal recessive osteopetrosis type 6 (OPTB6). Alternatively spliced transcript variants have been found for this gene.

Target:	Pleckstrin Homology Domain-Containing Family M Member 1 (PLEKHM1)
Clonality:	Polyclonal
Reactivity:	Human
Tested Applications:	ELISA, WB
Host:	Rabbit
Recommended dilutions:	WB: 1/1000. Optimal dilutions/concentrations should be determined by the end user.
Conjugation:	Unconjugated
Immunogen:	KLH-conjugated synthetic peptide between 50-78 amino acids from the N-terminal region of human PLEKHM1.
Isotype:	IgG
Form:	Liquid
Purification:	Purified through a protein A column, followed by peptide affinity purification.
Storage:	Aliquot and store at -20°C. Avoid repeated freeze/thaw cycles.
UniProt Primary AC:	Q9Y4G2 (UniProt , ExPASy)

Datasheet

Version: 3.0.0

Revision date: 22 Aug 2025



Gene Symbol: PLEKHM1

String: [9606.ENSP00000389913](#)

Molecular Weight: Calculated MW: 117 kDa

Buffer: PBS containing 0.09% sodium azide.

Note: THIS PRODUCT IS FOR RESEARCH USE ONLY. NOT FOR USE IN DIAGNOSTIC, THERAPEUTIC OR COSMETIC PROCEDURES. NOT FOR HUMAN OR ANIMAL CONSUMPTION.

For Reference Only