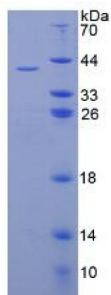


Human PI Protein

Catalogue No.: abx650990



SDS-PAGE analysis of Human PI Protein.

Human PI Protein is a recombinant Human protein produced in a Prokaryotic expression system (E. coli).

Target: PI**Origin:** Human**Expression:** Recombinant**Tested Applications:** WB, SDS-PAGE**Host:** E. coli**Conjugation:** Unconjugated**Form:** Lyophilized**Purity:** > 97%

Reconstitution: To keep the original salt concentration, we recommend reconstituting to the original concentration prior to lyophilization (see Concentration) in ddH₂O. If a lower concentration is required, dilute in 20 mM Tris, 150 mM NaCl, pH 8.0. If a higher concentration is required, the product can be reconstituted directly in 20 mM Tris, 150 mM NaCl, pH 8.0, though please note that this will change the overall salt concentration. The stock concentration should be between 0.1-1.0 mg/ml. Do not vortex.

Storage: Store at 2-8 °C for up to one month. Store at -80 °C for up to one year. Avoid repeated freeze/thaw cycles.

Molecular Weight: Calculated MW: 41.8 kDa
Observed MW (SDS-PAGE): 41 kDa

Sequence Fragment: Phe25-Asn110**Tag:** N-terminal His tag and GST tag

Datasheet

Version: 2.0.0

Revision date: 23 Jun 2025



Buffer:	Prior to lyophilization: 20 mM Tris, 150 mM NaCl, pH 8.0, containing 1 mM EDTA, 1 mM DTT, 0.01% Sarcosyl, 5% Trehalose and Proclin-300.
Activity:	Not tested
Concentration:	Prior to lyophilization: 200 µg/ml
Note:	THIS PRODUCT IS FOR RESEARCH USE ONLY. NOT FOR USE IN DIAGNOSTIC, THERAPEUTIC OR COSMETIC PROCEDURES. NOT FOR HUMAN OR ANIMAL CONSUMPTION.

For Reference Only