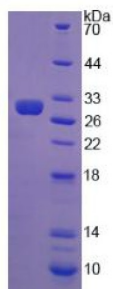


Chicken Muellerian-Inhibiting Factor (AMH) Protein

Catalogue No.: abx650999



SDS-PAGE analysis of Chicken AMH Protein.

Chicken AMH Protein is a recombinant Chicken protein produced in a Prokaryotic expression system (E. coli).

This protein is the immunogen for the following antibodies: [abx132175](#)

Target: Muellerian-Inhibiting Factor (AMH)

Research Area: Endocrinology, Reproductive Science, Hormone Metabolism

Origin: Chicken

Expression: Recombinant

Tested Applications: WB, SDS-PAGE

Host: E. coli

Conjugation: Unconjugated

Form: Lyophilized

Activity: Not tested

Purity: > 95%

Reconstitution: To keep the original salt concentration, we recommend reconstituting to the original concentration prior to lyophilization (see Concentration) in ddH₂O. If a lower concentration is required, dilute in 20 mM Tris, 150 mM NaCl, pH 8.0. If a higher concentration is required, the product can be reconstituted directly in 20 mM Tris, 150 mM NaCl, pH 8.0, though please note that this will change the overall salt concentration. The stock concentration should be between 0.1-1.0 mg/ml. Do not vortex.

Storage: Store at 2-8°C for up to one month. For long-term storage, store at -80°C. Avoid repeated freeze/thaw cycles.

Datasheet

Version: 3.0.0

Revision date: 12 Oct 2025



UniProt Primary AC: Q788U7 ([UniProt](#), [ExPASy](#))

Gene Symbol: AMH

Molecular Weight: Calculated MW: 30.1 kDa
Observed MW (SDS-PAGE): 32 kDa

Sequence Fragment: Thr409-Arg644

Tag: N-terminal His tag

Buffer: Prior to lyophilization: 20 mM Tris, 150 mM NaCl, pH 8.0, containing 1 mM EDTA, 1 mM DTT, 0.01% Sarcosyl, 5% Trehalose and Proclin-300.

Concentration: Prior to lyophilization: 200 µg/ml

Note: THIS PRODUCT IS FOR RESEARCH USE ONLY. NOT FOR USE IN DIAGNOSTIC, THERAPEUTIC OR COSMETIC PROCEDURES. NOT FOR HUMAN OR ANIMAL CONSUMPTION.

For Reference Only